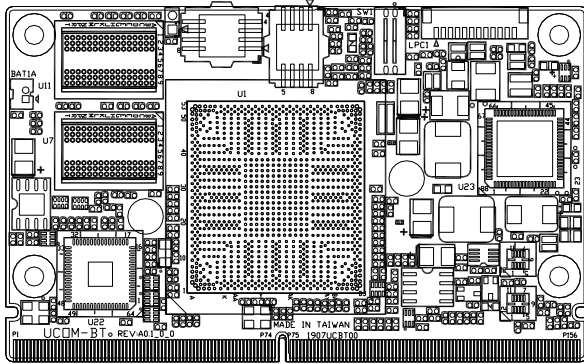


uCOM-BT

SMARC with Intel® BayTrail SoC

Preliminary



Features

- Intel® Atom™ N2900/E3800 series Processor
- Onboard DDR3L Memory 2GB
- Gigabit Ethernet x 1
- 18/24-bit Single-Channel LVDS LCDs/eDP, DDIx1
- High Definition Audio Interface
- SATA x 2
- USB2.0 x 7, USB3.0 x1, GPIO 8-bit, PCI-Express [x1] x 3
- SMARC platform, 82mmx50mm

Specifications

System	
Form Factor	SMARC 82 x 50 mm
Processor	Intel® Atom™ SOC Processor N2807: Dual Core 1.58G/ 4.5W E3825: Dual Core 1.33G/6W E3815: Single Core 1.46G/5W
System Memory	Onboard DDR3L 2GB
Chipset	Intel® Atom SOC
I/O Chipset	Intel® Atom SOC
Ethernet	Intel® I211AT for 10/1000/1000Base-TX
BIOS	AMI BIOS, Legacy free BIOS
Wake on LAN	Yes
Watchdog Timer	ITE IT8518E
H/W Status Monitoring	Support CPU temperature monitoring
Expansion Interface	3x PCIe 2.0 1x 4-bit SDIO up to 4x I2C
Power Requirement	Normal: +5V 9~36V
Power Consumption	TBD
Board Size	82mm x 50mm
Gross Weight	TBD
Operation Temperature	32°F ~ 140°F (0°C ~ 60°C) -40°F ~ 185°F (-40°C ~ 80°C) by E3825/E3815
Storage Temperature	-4°F ~ 158°F (-20°C ~ 70°C)
Operation Humidity	10% ~ 80% relative humidity, non-condensing
MTBF	TBD
Display	
Chipset	Intel Atom SOC
Graphic Engine	Supports CRT/LCD Simultaneous/Dual view display
Resolution	Up to 2560 x 1600 for HDMI Up to 2560 x 1600 for Display Port Up to 2560 x 1600 for eDP Up to 2560 x 1600 for LCD Supports 18bit and 24bit dual channel up to

	WUXGA 1920x1200
LVDS Interface	Supports 18bit and 24bit dual channel up to WUXGA 1920x1200
SDVO	N/A
I/O	
Storage	SATA II x 1, eMMC (optional)
USB	USB3.0 x 1 USB2.0 x 4 (1 for USB OTG)
Audio	I2S x1, HD Audio x 1
GPIO	12 bit, 1.8V

Packing List

M2.5 Screw x 4
Product CD
uCOM-BT

Ordering Information

uCOM-BT-A10
SMARC Intel BT E3825
uCOM-BT-A10-01
SMARC Intel BT E3815
uCOM-BT-A10-02
SMARC Intel BT N2807

Optional accessory

ECB-960-A10
SMARC carrier board for x86 platform