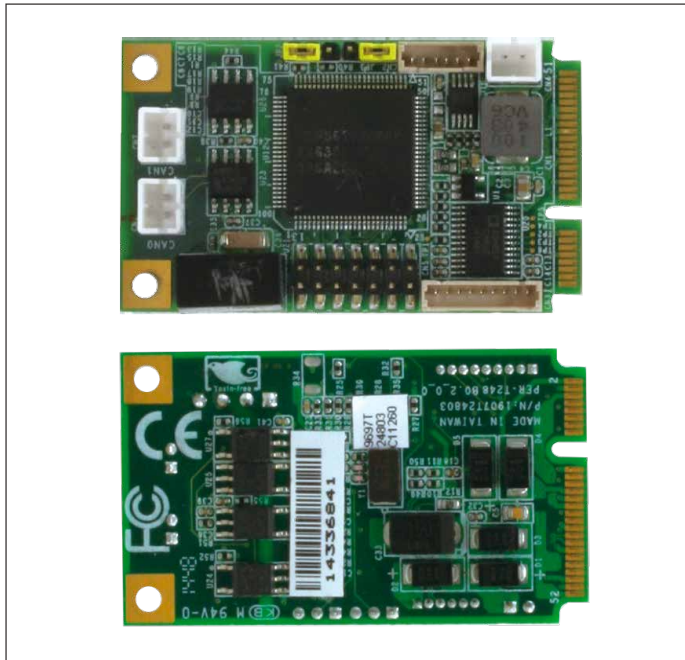


# PER-T248

## Minicard/USB/UART Interface CANBUS Module



## Features

- 2 CAN Channels CAN 2.0B
- PCI Express Mini Card USB Type Interface Card
- Receive Buffers, Masks, Filters, and Data Byte Filtering
- Supports Single-shot Transmission
- IEC 61000-4-2 (ESD) ± 16KV (air)
- Provide API and SDK for Window/Linux

## Specifications

System	
Form Factor	PCI Express Mini Card
Interface	Mini-PCI Express (USB signal) x 1 USB (WAFER) x 1 RS-232 (WAFER) x 1
CAN Controller	RX630
High-Speed CAN Transceiver	TJA1050
CAN Function	Support dual port CAN Support CAN 2.0A/B Implements ISO-11898 Standard Physical Layer Supports 1 Mb/s operation (125 Kbps default) Receive buffers, masks, filters, and data byte filtering Supports Single-shot transmission 100 mA active current (typical)
Transfer rates	125Kbps, 500Kbps, 1Mbps
CAN baud rate	125Kbps ~ 1Mbps
Protections	120 Ohm line termination IEC 61000-4-2 (ESD) ± 15KV (air/contact) Support Isolation 2Kv
Software	Provide API and SDK for Window & Linux Provide Utility tools for Window
Firmware Update	Via USB connector
Power Requirement	Requirement +3.3V via Mini-PCIe Requirement +5V via USB
Operating Temperature	-20°C ~ 70°C
Storage temperature	-40°C ~ 85°C
Storage humidity	5~ 95% , non-condensing
Vibration	1g RMS / 5~ 500Hz / operation
Shock	20G peak acceleration (11 msec. duration)
Drop	76cm (1 Corner, 3 Edge, 6 Surface)
EMC	CE /FCC class A PreScan

## Packing List

- I/O Cable
- Product CD
- PER-T248

## Ordering Information

- PER-T248-A10  
Mini PCIe, Support CAN Bus 2.0B x 2