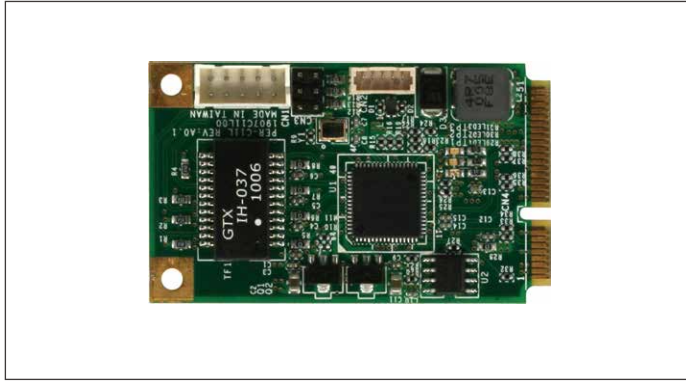


# PER-C11L

Mini-PCIe Module With One Ethernet Port and One USB Port



## Specifications

System	
Form Factor	Mini-Card Type (30mm x 50.95mm)
Controller	Intel® 82574L Gigabit Ethernet Chip
Speed	Supports 10/100/1000Base-TX, Auto-negotiation
Function	IEEE 802.3x compliant flow control support IEEE 802.1Q Virtual LAN supports Wake-On-LAN function
Power Requirement	Supports ACPI, PCI power management +3.3V AUX
Operating Temperature	32 °F ~ 140 °F (0 °C ~ 60 °C)
I/O	
USB	USB2.0 x 1

## Features

- PCI-Express Mini-Card Interface
- Intel® 82574L Gigabit LAN Chip x 1
- USB2.0 x 1

## Packing List

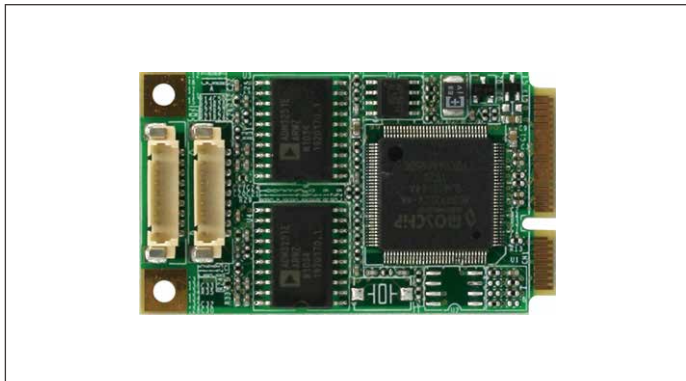
- LAN Cable
- USB Cable
- Product CD (Including Quick Installation Guide)
- PER-C11L

## Ordering Information

- **TF-PER-C11L-A10**  
Mini-PCIe, 10/100/1000Base-TX Ethernet Module w/ Intel® 82574L, Rev. A1.0

# PER-C21C

Mini-PCIe Module With Two Isolated UART Ports



## Specifications

System	
Form Factor	Mini-Card Type (30mm x 50.95mm)
UART Chipset	MosChip (MCS9922)
Port Number	Isolated RS-232 port x 2 (only Tx/D and Rx/D)
Power Requirement	+ 3.3V
Operating Temperature	32 °F ~ 140 °F (0 °C ~ 60 °C)

## Features

- PCI-Express Mini-Card Interface
- Two UART Tx & Rx With Isolation

## Packing List

- **1701090150**  
RS-232 Cable
- Product CD (Including Quick Installation Guide)
- PER-C21C

## Ordering Information

- **TF-PER-C21C-A10**  
Mini-PCIe, 2-port Isolation RS-232 Module, Rev. A1.0