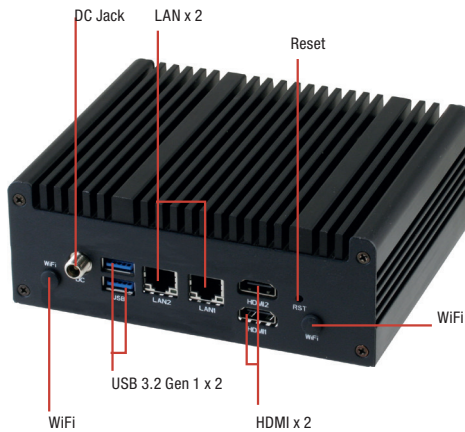


NANO-002F

Mini PC with 6th Generation Intel® Core™ i7/i5/i3/Celeron 15W Processor, 2 HDMI, 2 LAN Ports, COM Port and 4 USB Ports

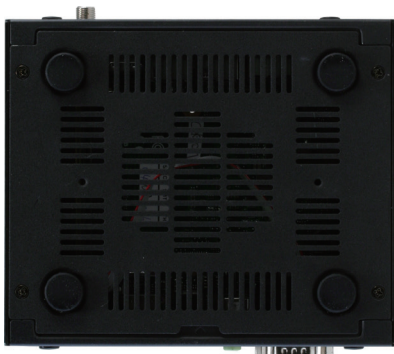
Front View



Rear View



Bottom View



Features

- 6th Generation Intel® 14nm ULT Core™ i7/i5/i3/Celeron® 15W BGA Processor
- Dual Gigabit Ethernet
- Dual HDMI Ports
- USB 3.2 Gen 1 Port x 4

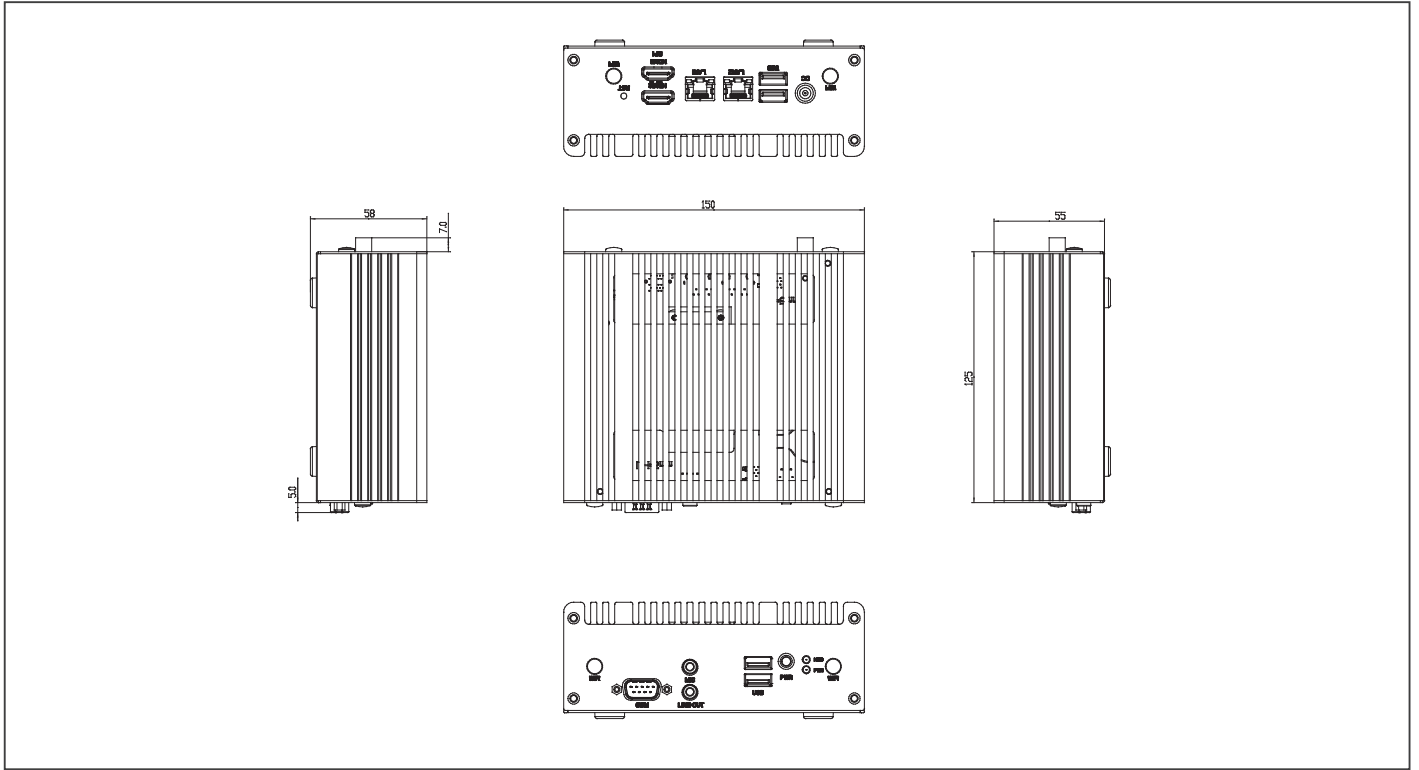


Specifications

| System | |
|--------------------------|--|
| CPU | 6th gen. Intel® 14nm ULT Core™, BGA CPU, 15W TDP. i7-6600U 2C/4T GT2 2.6/3.4 GHz 4M/ i5-6300U 2C/4T GT2 2.4/3.0 GHz 3M/ i3-6100U 2C/4T GT2 2.3 GHz 3M/ Celeron® 3955U 2C/2T GT1 (f) 2.0 GHz 2M |
| Chipset | Integrated into SoC |
| System Memory | SODIMM x 2, max. 32 GB, DDR4 2133/1867 MHz non-ECC, un-buffered memory |
| I/O Chipset | NCT5538D |
| Storage Devices | M.2 2280 M-Key slot (PCIe[x4] + SATA) x 1 |
| Ethernet | Realtek® 8111G 10/100/1000Mb LAN x 2, RJ-45 x 2 |
| Audio | Realtek® ALC887 |
| TPM | — |
| Expansion Slots | M.2 2230 E-Key slot (PCIe+USB) x 1 |
| BIOS | 128M bit Flash ROM, AMI BIOS |
| H/W Monitor | Temperature Monitor on CPU/System, Voltage Monitor on Vcore/5V/3.3V/12V, Fan Monitor on Chassis |
| WatchDog Timer | 1~255 steps by software program |
| Smart Fan Control | Chassis Fan |
| Wake On LAN / PXE | Yes (WOL / PXE) |
| Power State | S3, S4, S5 |
| Graphics | |
| Graphics Chipset | Integrated Graphics |
| Resolution | HDMI 1.4 up to 4096 x 2160@24Hz |
| Brightness Control | — |
| Graphics Multi Display | HDMI + HDMI |
| Environment & Power & ME | |
| Battery | Lithium battery |
| Power Requirement | DC Power x 1 (DC: 12V~19V, wide rage:12V-5%~ 19V+10%) |
| Operating Temperature | FAN: 0°C ~ 50°C |
| Operating Humidity | 20%~90%RH, non-condensing |
| Certificate | CE & FCC class A |
| Form Factor | NANO ITX: 4.72" x 4.72" (120mm x 120mm) |
| Weight | — |
| Front I/O | |
| USB | USB 3.2 Gen 1 port x 2 |
| Audio | Audio Jack x 2 : Line-out (green), Mic-in (pink) |
| Serial port | COM port RS-232 |
| Power | On/Off Button x 1 |
| Others | Power LED x 1 + HD LED |
| Rear I/O | |
| USB | USB 3.2 Gen 1 port x 2 |
| Display I/O | HDMI Connector x 2 |
| LAN I/O | RJ-45 Connector x 2 |
| Others | Reset Button x 1, DC Power Jack x 1 |
| Internal I/O | |
| Storage | M.2 2280 M-Key slot x 1 |
| FAN | Chassis Fan connector x 1 (3-pin, p=2.00mm) |
| Others | Reset Switch 2-pin header x 1, power button 2-pin header x 1, M.2 2230 E-Key slot x 1 |
| Operating System | |
| OS | Windows® 7 32 bit, Windows® 7 64 bit, Windows® 8.1 64 bit, Windows® 10 64 bit, Linux Fedora* 22 (64b) |

Dimension

Unit: mm



Ordering Information

| Part Number | CPU | RAM Module | Display | Cooler | Storage | LAN | USB | Serial Port | Expansion Slot | Power | Mounting |
|-------------------|------------------------|------------|----------|--------|---------|---------|------------------------|-----------------|----------------|----------|------------|
| NANO-002F-3955-01 | Celeron® 3955U 2.0G/2M | — | HDMI x 2 | Fan | — | GbE x 2 | USB 3.2 Gen 1 Port x 4 | RS-232 Port x 1 | M.2 2280 x 1 | DC12-19V | VESA mount |
| NANO-002F-6100-01 | I3-6100U 2.3G/3M | — | HDMI x 2 | Fan | — | GbE x 2 | USB 3.2 Gen 1 Port x 4 | RS-232 Port x 1 | M.2 2280 x 1 | DC12-19V | VESA mount |
| NANO-002F-6300-01 | I5-6300U 2.4G/3M | — | HDMI x 2 | Fan | — | GbE x 2 | USB 3.2 Gen 1 Port x 4 | RS-232 Port x 1 | M.2 2280 x 1 | DC12-19V | VESA mount |
| NANO-002F-6600-01 | I7-6600U 2.6G/4M | — | HDMI x 2 | Fan | — | GbE x 2 | USB 3.2 Gen 1 Port x 4 | RS-232 Port x 1 | M.2 2280 x 1 | DC12-19V | VESA mount |

Packing List

- VESA Mount Kit
- NANO-002F

Optional Accessories

- **1702031802**
Power Cord (US & Taiwan Type)
- **1702031803**
Power Cord (European Type)
- **170203180B**
Power Cord (China Type)
- **170203180E**
Power Cord (Japanese Type)
- **125530060Y**
60W Power Adapter
- **968C064G2X**
M.2 2280 64GB SSD
- **968C128G1G**
M.2 2280 128GB SSD