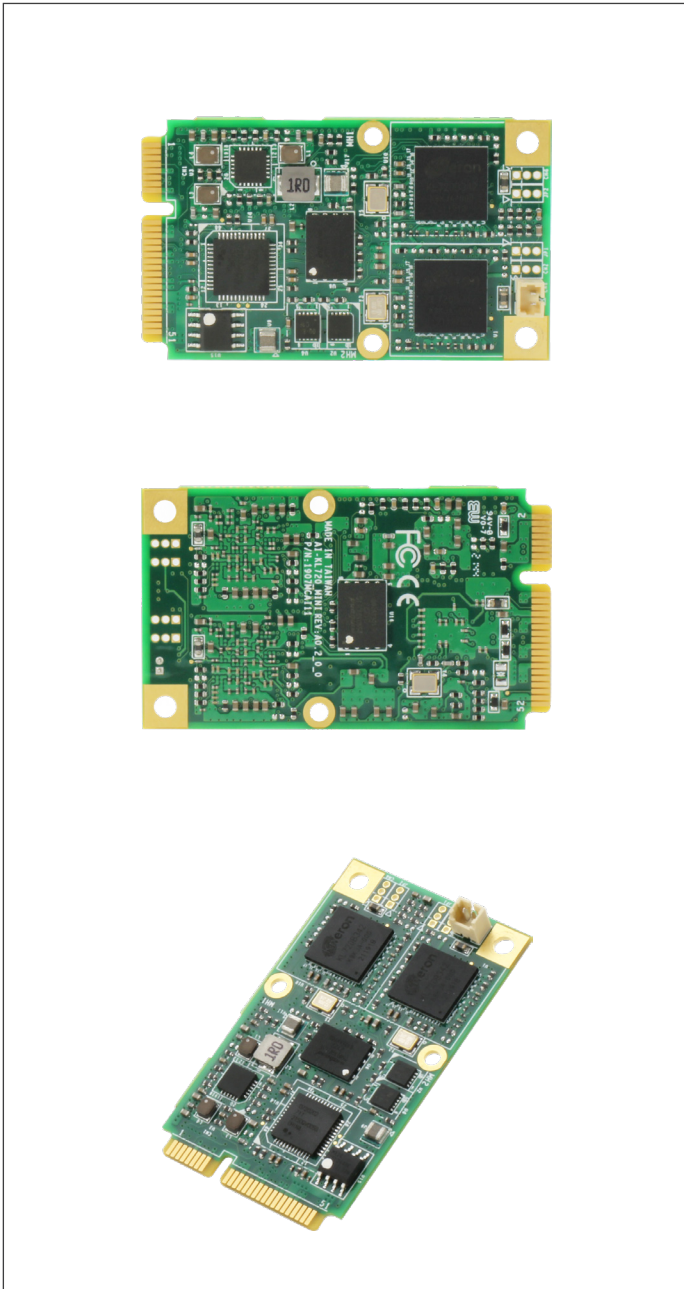
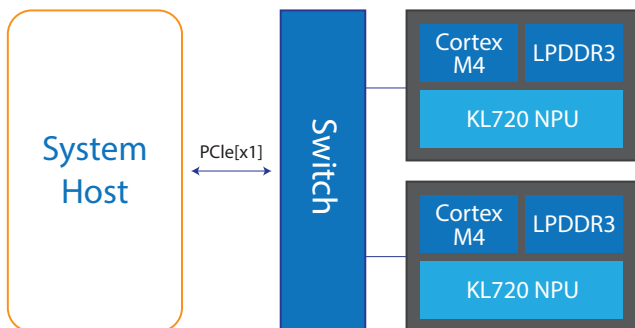


Mini-AI-720

AI Edge Computing Module with Kneron KL720 NPU



AI Architecture



Features

- Kneron KL720 NPU (Designed by ARM architecture)
- Mini card (PCIe[x1] interface, Full size)
- Accelerator for AI Edge Computing
- Enhanced performance to process high resolution video and graphic related computing



Specifications

System	
IC	Kneron KL720
Type	ARM CM & DSP
Support Framework	Pytorch, ONNX, TensorFlow 1.6, Tensorflow lite, Keras, Caffe
Support Model	Resnet, GoogleNet, YOLO, Tiny YOLO, MobileNet-SSD, DenseNet, RNN, LSTM
Memory Type	LPDDR3
NPU Performance	1.4 TOPS
Overall Power Consumption	5W TDP
Others	
Operating Temperature	32°F~122°F (0°C ~ 50°C with cooler 5m/s)
Storage Temperature	32°F~158°F (0°C~70°C)
Operating Humidity	0% ~ 90% relative humidity, non-condensing
Certification	CE/FCC Class A

Packing List

- M3 screw x 2
- PER-T720-MIAI-A10-0001 x 1

Optional Accessories

- PER-T720-MINI-FAN01

Ordering Information

Part Number	Description
PER-T720-MIAI-A10-0001	AI.NPU 720.full size mini Card(PCIe[x1] interface).A1.0