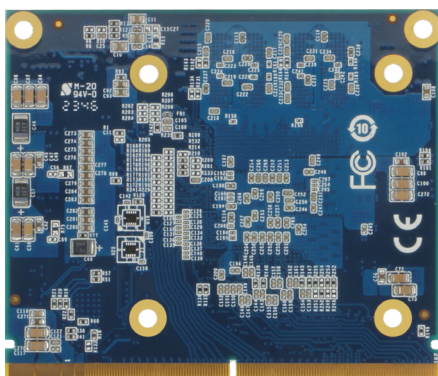
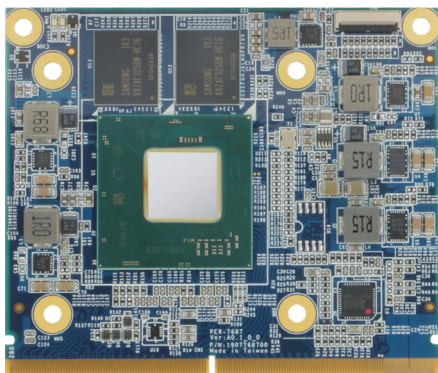


# MXM-ACMA

Embedded MXM 3.1 Type A Module with Intel® Arc™ A370/A350 GPU



## Features

- Intel® Arc™ A370M/A350M Embedded GPU, up to 8 Xe-cores
- 4GB GDDR6 Memory
- PCIe 4.0 [x8] Interface
- DP++ 1.4/HDMI 2.1 x 4
- Standard MXM 3.1 Type A form factor
- OpenCL™/OpenGL®/oneAPI/Direct X12/Ray Tracing Support



## Specifications

System	
Form Factor	Standard MXM 3.1 Type A form factor
GPU	Intel® Arc™ A370M GPU (8 Xe-cores, TGP 35W) Intel® Arc™ A350M GPU (6 Xe-cores, TGP 25W)
Memory	4GB GDDR6, 64-bit, Bandwidth 112GB/s
Display Interface	DP++ 1.4 x 4 or HDMI 2.1 x 4
Dimension	3.2" x 2.7" (82mm x 70mm)
Power Consumption	Intel® Arc™ A370M GPU, TGP 35W Intel® Arc™ A350M GPU, TGP 25W
Operation Temperature	32°F ~ 140°F (0°C ~ 60°C) in 0.5m/sec airflow
Storage Temperature	-40°F ~ 185°F (-40°C ~ 85°C)
Operating Humidity	0% ~ 90% relative humidity, non-condensing
OS Support	Windows 10 (64bit) / Windows 11 Ubuntu 22.04 LTS
Others	OpenCL™ 4.6/OpenGL® 3.0/oneAPI/DirectX 12 Ultimate/Ray Tracing Support

## Packing List

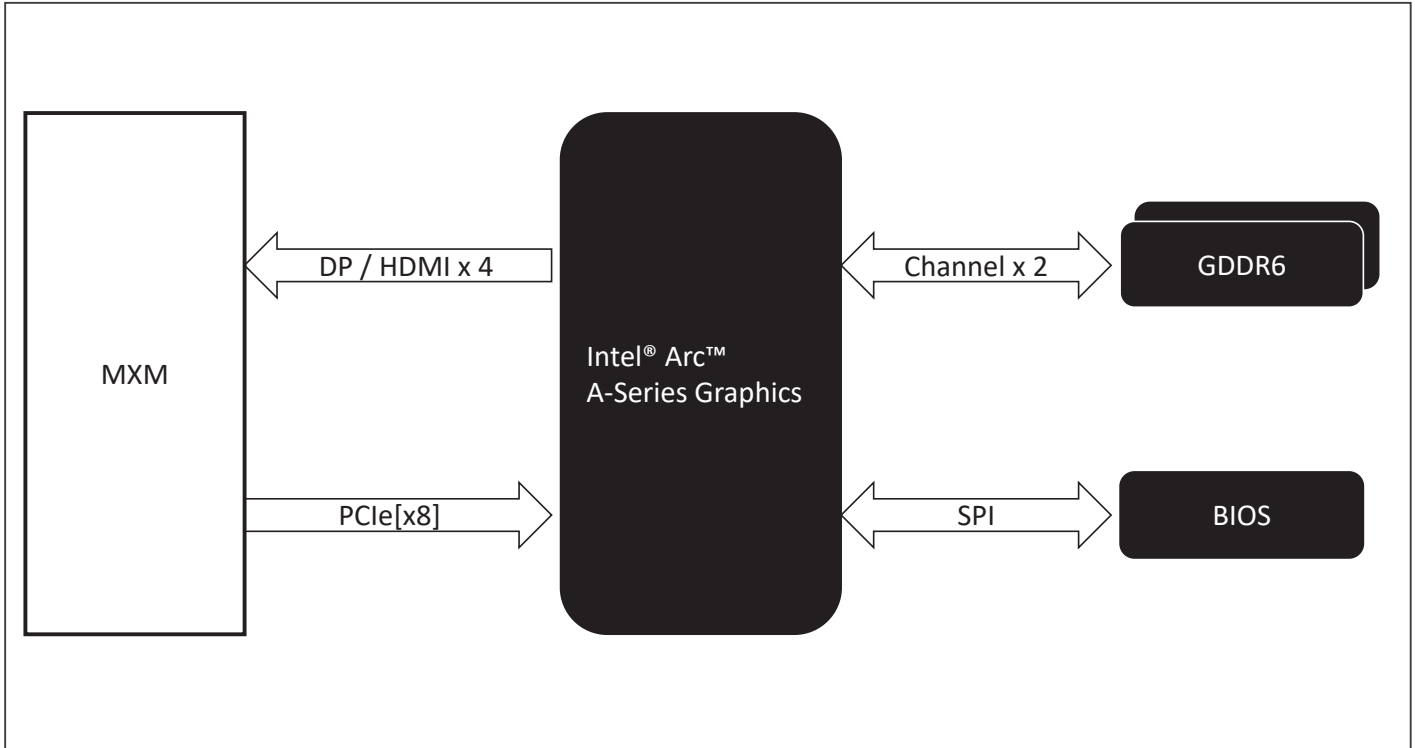
- MXM-ACMA x 1

## Optional Accessories

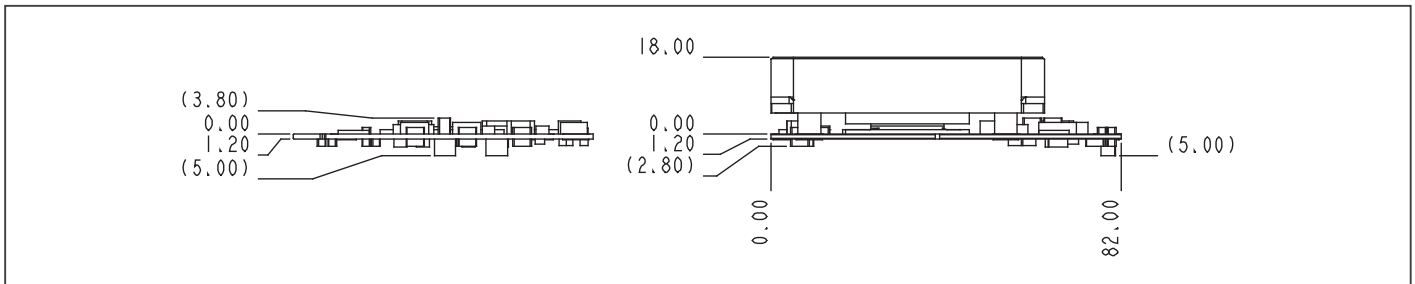
Part Number	Description	Qty
PER-T686-A02-0001	PCIe to MXM riser card	1
MXM-ACMA-FAN01	Cooler.Smart FAN.64*55*18mm.4pin	1

Note: All specifications are subject to change without notice.

## Block Diagram Unit: mm



## Dimension Unit: mm



## Ordering Information

Part Number	Form Factor	GPU	Memory	Display	TGP	Operating Temperature	Interface
MXM-ACMA-A10-0001	MXM 3.1 Type A	Intel® Arc™ A370M	4GB GDDR6	DP++1.4 x 4	35W	0°C ~ 60°C	PCIe 4.0 [x8]
MXM-ACMA-A10-0002	MXM 3.1 Type A	Intel® Arc™ A350M	4GB GDDR6	DP++1.4 x 4	25W	0°C ~ 60°C	PCIe 4.0 [x8]