

M2AI-520

AI Edge Computing Module with Kneron KL520 NPU

Preliminary

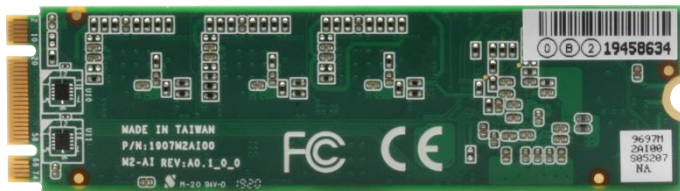
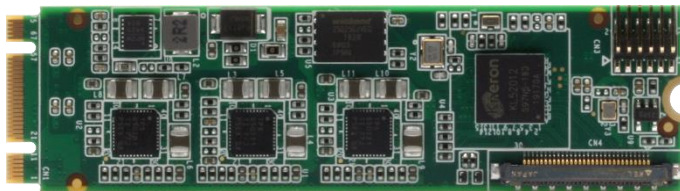


Features

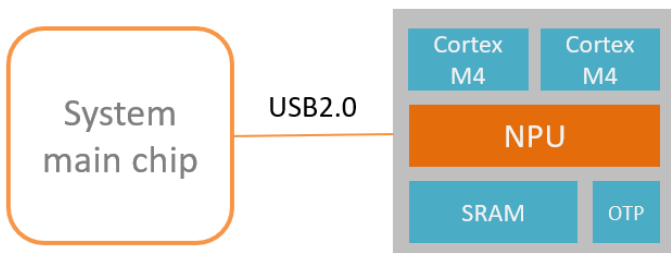
- Kneron KL520 NPU (Designed by ARM architecture)
- M.2 B Key (22x80mm)
- Accelerator for AI Edge Computing
- Good for people monitoring, retail application

Specifications

System	
IC	Kneron KL520
Type	Integrated SoC
Support Framework	ONNX, TensorFlow, Keras, Caffe
Support Model	Vgg16, Resnet, GoogleNet, YOLO, Tiny YOLO, Lenet, MobileNet, DenseNet
Overall Power Consumption	0.5-0.9W
Others	
Operating Temperature	32°F ~ 158°F (0°C ~ 70°C)
Storage Temperature	-40°F ~ 185°F (-40°C ~ 85°C)
Operating Humidity	0% ~ 90% relative humidity, non-condensing
Certification	CE/FCC Class A



AI Architecture



Packing List

M2AI-520 Module x 1
M3 Screw x 1

Optional Accessory

TBD

Ordering Information

TBD