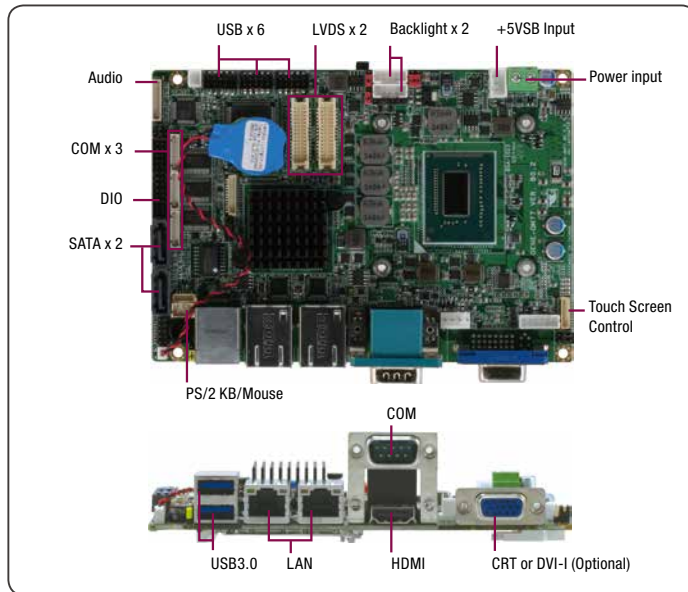


03 GENE-QM77 Rev. B

SubCompact Boards

3.5" SubCompact Board with Onboard Intel® Core™ i7-3555LE/ Celeron® 847E Processor

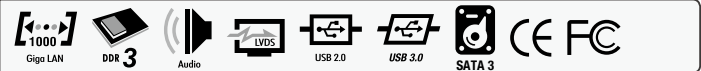


Features

- Onboard Intel® Core™ i7-3555LE/ Celeron® 847E Processor
- Intel® QM77/HM76
- DDR3 1333/1600 MHz SODIMM x 1, Up to 8 GB
- Gigabit Ethernet x 2, RJ-45 x 2
- CRT or DVI (Optional), 18/24-bit Dual-Channel LVDS LCD x 2, HDMI
- 2CH HD Audio
- SATA 6.0 Gb/s x 2 (RAID by BIOS), CFast™ x 1
- USB3.0 x 2, USB2.0 x 6, COM x 4, 8-bit Digital I/O
- Mini-Card x 1
- +12V Only Operation
- Supports iAMT with Intel® QM77
- Onboard 4/5/8-wire Resistive Touch Screen Controller
- AAEON Hi-Safe/Hi-Manager SDK/Utility Supported
- mSATA x 1 (Optional, Sharded Mini-Card Interface)
- IEEE 1588 Compatible

Specifications

System	
Form Factor	3.5" SubCompact Board
CPU	Intel® Core™ i7/i3/Celeron® (BGA based,17W)
CPU Frequency	Up to 1.8 GHz
Chipset	Intel® PCH QM77/HM76
Memory Type	DDR3 1066/1333/1600, SODIMM x 1
Max. Memory Capacity	8 GB
BIOS	SPI type
Wake on LAN	Yes
Watchdog Timer	255 Levels
Power Requirement	+12V
Power Supply Type	AT/ ATX
Power Consumption (Typical)	Intel® Core™ i7-3555LE 2.5 GHz, DDR3 1333 8 GB 2.49A@+12V
Dimension (L x W)	5.75" x 4" (146mm x 101.6mm)
Operating Temperature	32°F ~ 140°F (0°C ~ 60°C)
Storage Temperature	-40°F ~ 176°F (-40°C ~ 80°C)
Operating Humidity	0% ~ 90% relative humidity, non-condensing
MTBF (Hours)	50,000
Certification	CE/FCC
Display	
VGA/LCD Controller	Intel® Core™ i7/i3/Celeron® integrated
Video Output	CRT+LVDS, CRT+DVI, CRT+HDMI, LVDS+DVI, LVDS+HDMI, DVI+HDMI, LVDS+LVDS
Backlight inverter supply	Up to 24-bit dual-channel LVDS x 2
I/O	
Ethernet	Intel® 82579LM, Realtek RTL-8111E, 10/100/1000Base
Audio	High Definition Audio Interface
USB Port	USB2.0 x 6, USB3.0 x 2
Serial Port	RS-232 x 3, RS-232/422/485 x 1
Parallel Port	SPP/EPP/ECP x 1 (By BIOS setting)
HDD Interface	SATAIII x 2
FDD Interface	—
SSD	CFast™, mSATA (share with Mini-Card by BOM)
Expansion Slot	Mini-Card x 1
DIO	8 bit
SIM	x 1
TPM	x 1
Touch	x 1



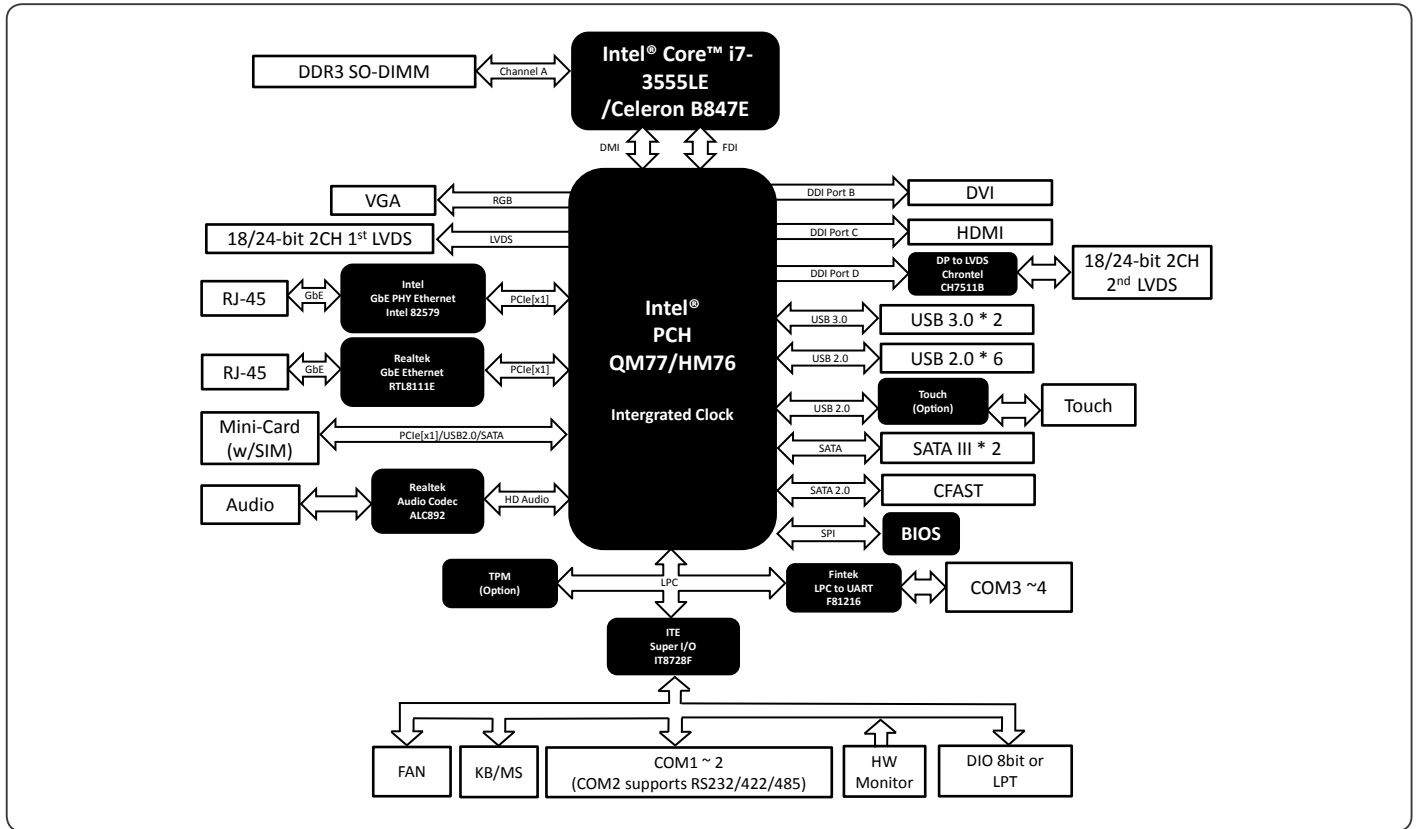
Packing List

- Product DVD
- GENE-QM77 Rev. B with Active Cooler

Optional Accessories

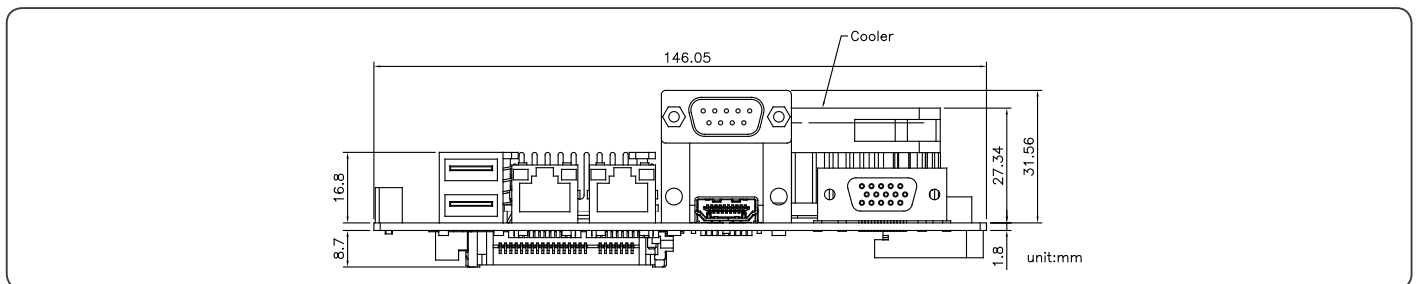
- 1709100208
USB Cable, Length 20cm
- 1701090150
COM Port Cable, Length 15cm
- 1709100254
Audio Cable, Length 25cm
- 1702150155
Power Cable for 2.5" SATA Hard Disk, Length 15cm
- 1709070500
SATA Cable, Length 50cm
- 170204010R
Big Double Row 4-Pin Power Input Cable For +12V Input, Length 10cm
- 1700060157
Keyboard/Mouse Cable

Block Diagram



Dimension

Unit: mm



Ordering Information

Part Number	CPU	Chipset	Fan/ Fanless	Display	LVDS	Storage	LAN	USB	RS-232	RS-232/422/485	Expansion Slot	Power	Power Temp	Others
GENE-QM77-B10	Intel® Core™ i7-3555LE	Intel® QM77	Fan	CRT + LVDS CRT + HDMI LVDS + HDMI LVDS + LVDS	1st 18/24b, 2CH 2nd 18/24b, 2CH	SATA x 2 CFast™ x 1	GbE x 2	USB3.0 x 2 USB2.0 x 6	3	1	Mini-Card x 1	+12V, AT/ ATX	0°C ~ 60°C	Touch Controller, TPM, DIO x 8
GENE-QM77-B10-01	Intel® Core™ i7-3555LE	Intel® QM77	Fan	DVI + LVDS DVI + HDMI LVDS + HDMI LVDS + LVDS	1st 18/24b, 2CH 2nd 18/24b, 2CH	SATA x 2 CFast™ x 1	GbE x 2	USB3.0 x 2 USB2.0 x 6	3	1	Mini-Card x 1	+12V, AT/ ATX	0°C ~ 60°C	Touch Controller, TPM, DIO x 8
GENE-QM77-B10-06	Intel® Celeron® 847E	Intel® HM76	Fan	CRT+LVDS CRT + HDMI LVDS + HDMI LVDS + LVDS	1st 18/24b, 2CH 2nd 18/24b, 2CH	SATA x 2 CFast™ x 1	GbE x 2	USB3.0 x 2 USB2.0 x 6	2	1	Mini-Card x 1	+12V, AT/ ATX	0°C ~ 60°C	Touch Controller, DIO x 8