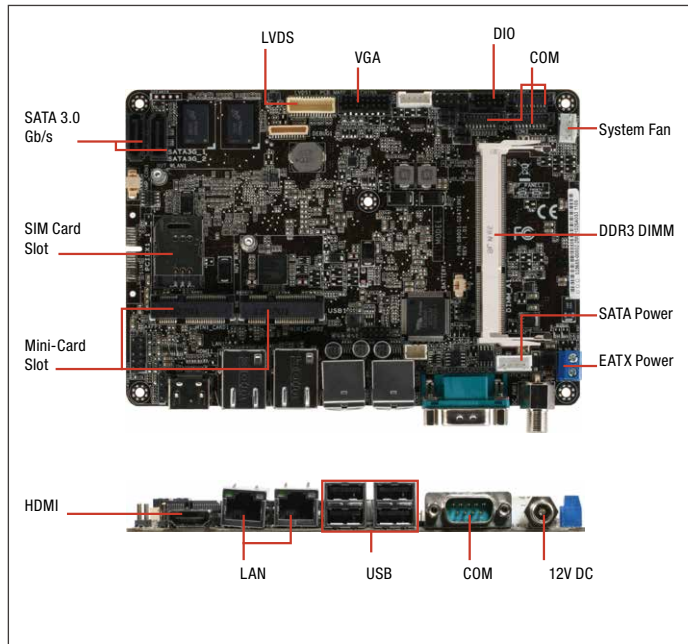


## Intel® Atom™ N2600/N2800 Processor Low Profile Board with Graphics AMD HD7410M &amp; Dual LAN



## Specifications

System	
Processor	Integrated Intel® Atom™ processor N2600/N2800
Chipset	Intel® NM10
Memory	SODIMM x 1, DDR3 800/1066 MHz, non-ECC, un-buffered memory
Graphics	—
I/O Chipset	Fintek 81866D-I
Ethernet	Realtek PCIe Gb LAN 8111F x 2
Audio	Realtek 887 6-Channel High Definition Audio CODEC x 1, Audio Amplifier EUA 2012A x 1
TPM	—
Expansion Slots	Mini-Card with PCIe & USB x 2 (Full size with SIM card interface x 1, Half size x 1)
BIOS	64Mbit Flash ROM, AMI BIOS
H/W Monitor	Temperature Monitor on CPU/System, Voltage Monitor on Vcore/5V/3.3V/12V voltages, Fan Monitor on CPU/system
WatchDog Timer	1~255 steps by software program
Smart Fan Control	Yes
Wake On LAN/PXE	Yes (WOL/PXE)
Power State	S3, S4, S5
Graphics	
Graphics Chipset	—
Graphics Multi Display	LVDS+HDMI, VGA + LVDS, VGA+HDMI
VGA	Up to 1920 x 1200 @60 Hz
DVI	—
HDMI	Up to 1920 x 1200 @60 Hz
Display Port	—
LVDS	Up to 1920 x 1280 @60Hz, 18-bit single channel
eDP	—
Backlight Control	Voltage/ PWM, 1 x DC 5V/12V for LCD backlight inverter board
Environment & Power & ME	
Battery	Lithium battery
Power Requirement	DC connector at Rear IO x 1, onboard 2-pin Power connector x 1
Operating Temperature	14°F ~ 140°F (-10°C ~ 60°C)
Storage Temperature	—
Operating Humidity	0% ~ 90% RH, non-condensing
Certificate	CE & FCC class B
Form Factor	EPIC Form Factor, 4.53"x6.5" (115mmx165mm)
Weight	1.2 lb (0.5 Kg)
MTBF (Hours)	228,000

## Features

- Intel® Atom™ N2600/N2800 Processor
- Intel® NM10 Express Chipset
- 204-pin DDR3 800/1066 MHz SODIMM x 1, Up to 4 GB (N2800)/2 GB (N2600)
- Realtek 8111F PCIe Gigabit Ethernet LAN x 2
- VGA, HDMI, 24-bit Dual-Channel LVDS
- Audio Amplifier
- SATA 3.0 Gb/s x 2, COM x 4
- USB 2.0 x 6
- Mini-Card x 2
- DC 12V (Phoenix/ Lockable DC Connector)
- GPU: AMD HD7410M (For EPC-CV1-A10 & EPC-CV1-A20)



## Rear Panel I/O Ports

USB	USB2.0 x 4
Display I/O	HDMI x 1
Audio I/O	—
LAN I/O	LAN (RJ-45) port x 2
Serial Port	COM x 1 (RS-232/422/485)
PS/2 Port	—
Others	Lockable DC connector x 1 (12V)

## Internal I/O Connectors

Storage	SATA connector x 2, 4-pin SATA power connector x 1, Full Size Mini-Card slot x 1, Half Size Mini-Card slot x 1
USB	USB header x 1 support additional USB port x 2
Display I/O	VGA x 1 pin header, LVDS connector x 1, LCD_Power 5-pin connector x 1
Audio I/O	Line-out/ Mic-in Pin header x 1, SPDIF Output Pin header x 1
Serial Port	RS-232 pin header x 3
PS/2 Port	PS/2 Keyboard Mouse connector x 1 (6 pin)
Parallel Port	—
DIO	DIO x 1 connector
FAN	Chassis Fan connector x 1
Power	12V DC Power Connector x 1 (2-pin)
Others	SIM card connector x 1, Front panel header x 1, 4-pin Amplifier connector x 1

## OS

OS Support	Windows® XP 32-bit, Windows® 7 32-bit, Linux Fedora
------------	---

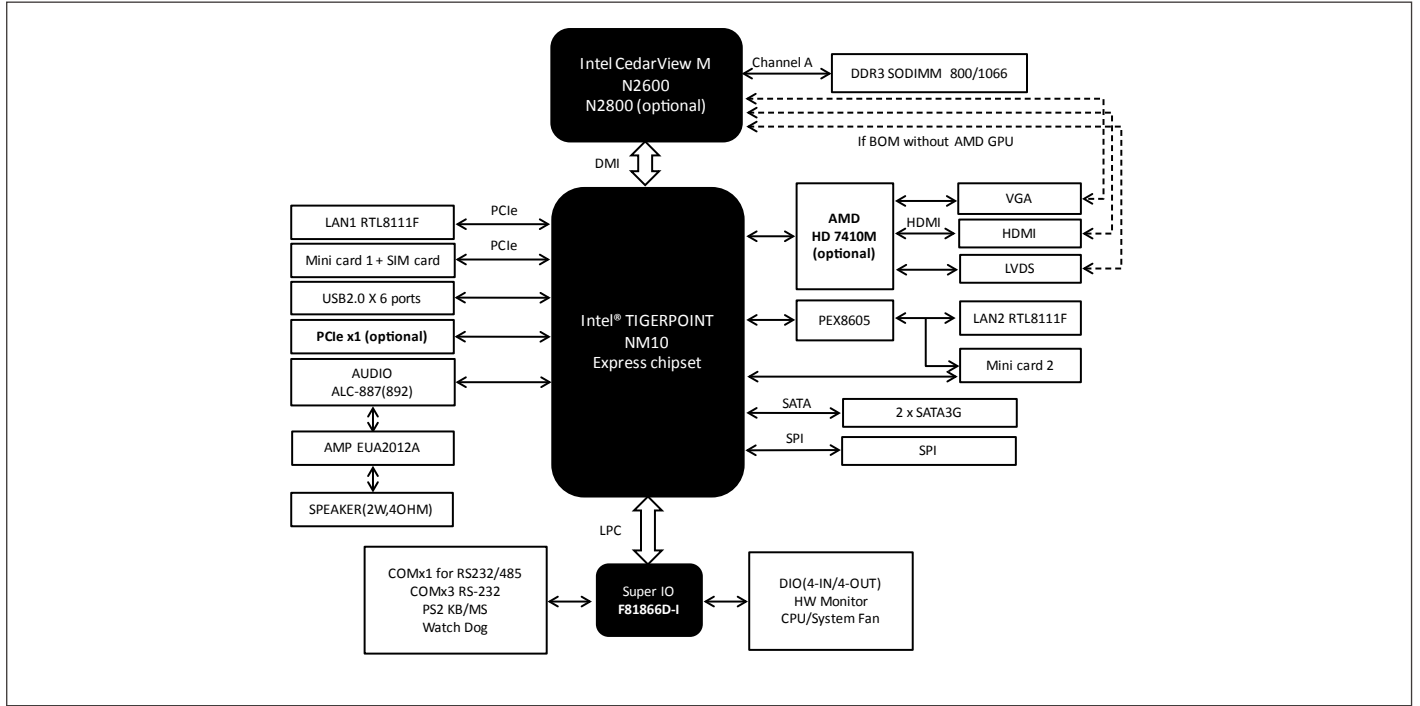
## Packing List

- Product CD
- SATA Power Cable
- SATA Cable
- EPC-CV1

## Optional Accessories

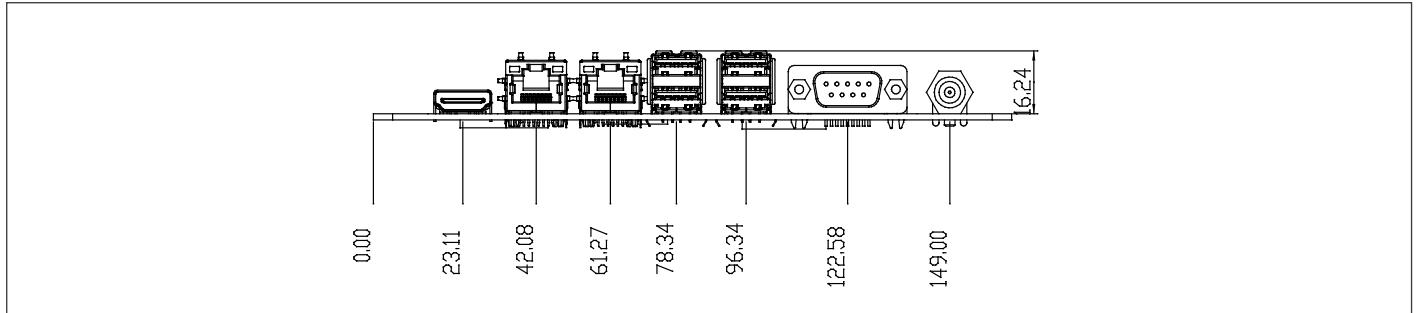
Part Number	Description
1757306007	Lockable Adapter 60W
1757908403	Lockable Adapter 84W
1700060152	PS2 Cable (150MM, p=2.00mm)
1709100201	USB 2.0 Cable (10P, 200MM, p=2.00mm, w/ bracket)
1701090150	COM Port Cable
1701160201	VGA Port Cable
M16CV10030	Heat Spreader

## Block Diagram



## Dimension

Unit: mm



## Ordering Information

Part number	CPU	RAM	Fan/Fanless	Display	Storage	LVDS	LAN	USB	RS-232	RS-232/422/485	Expansion Slot	Power	TPM	Temp.
EPC-CV1-A10-01	N2600	SO-DIMM x 1	Fanless	VGA, HDMI, LVDS	SATA2 x 2	Dual Channel 18 bit	GbE x 2	USB 2.0 x 6	3	1	Mini-Card x 2	12V DC	—	32°F ~ 140°F (0°C ~ 60°C)

### Note:

Intel® Atom™ Processor D2000 series and N2000 series (CV) do NOT support DMA function that may affect ECP mode of Parallel port.