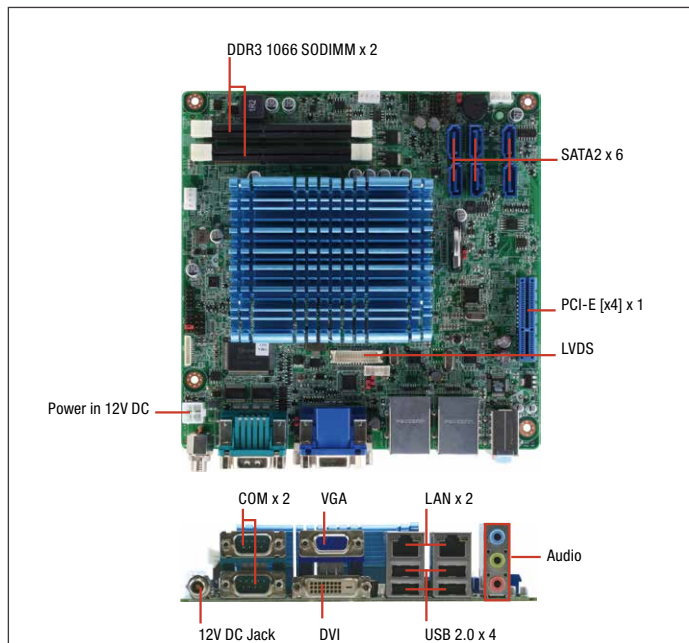


Embedded Motherboard with Intel® Atom™ D2550 B3 Processor



Specifications

System	
Processor	Intel® Atom™ D2550 B3 Processor Dual Core 1.86 GHz
Chipset	Intel® ICH10R
Memory	Dual-Channel with 204-pin SDRAM x 2, DDR3 1066, up to 4GB
Graphics	Intel® HD Graphics
I/O Chipset	Winbond W83627DHG-P
Ethernet	Realtek® 8111E, Gigabit Ethernet, RJ-45 x 2
Audio	Via VT1705
TPM	—
Expansion Slots	PCIe [x4] x 1
BIOS	AMI BIOS - 32MB ROM
H/W Monitor	Supports System temperature, Voltage, and Cooling fan status monitoring
WatchDog Timer	System Reset: 1~255 steps programmable
Smart Fan Control	CPU Fan/Chassis Fan
Wake On LAN/ PXE	Yes
Power State	S3,S4,S5
Graphics	
Graphics Chipset	Intel® Atom™ D2550 B3 Processor
Graphics Multi Display	VGA + LVDS, VGA+DVI, DVI+LVDS
VGA	1
DVI	1
HDMI	—
Display Port	—
LVDS	1
eDP	—
Backlight Control	Voltage
Environment & Power & ME	
Battery	Lithium Battery
Power Requirement	12V DC
Operating Temperature	32°F ~ 140°F (0°C ~ 60°C)
Storage Temperature	-40 °F ~ 176 °F (-40 °C ~ 80 °C)
Operating Humidity	0% ~ 90% R/H, non-condensing
Certificate	CE/FCC
Form Factor	Mini-ITX 6.7" x 6.7" (170mm x 170mm)
Weight	1.32 lb(0.6 kg)
MTBF	107,000
Rear Panel I/O Ports	
USB	USB 2.0 x 4 with Type A connectors
Display I/O	DVI-D x 1, VGA x 1
Audio I/O	Line-in, Mic-in, Line-out

Features

- Intel® Atom™ D2550 B3 Processor
- Intel® ICH10R Chipset
- 204-Pin Dual-Channel DDR3 1066 MHz SODIMM x 2, Up to 4 GB
- Integrated Intel® Graphics Engine Supports Dual View by VGA, DVI
- Realtek RTL 8111E, Gigabit Ethernet x 2
- SATA 3.0 Gb/s x 6
- USB 2.0 x 8, COM x 2



LAN I/O	RJ-45 x 2
Serial Port	RS-232 x 1, RS-232/422/485 x 1
PS/2 Port	—
Others	12V DC Jack

Internal I/O Connectors

Storage	SATA 3.0 Gb/s x 6
USB	USB 2.0 x 4
Display I/O	LVDSx1
Audio I/O	—
Serial Port	—
PS/2 Port	—
Parallel Port	—
DIO	8-bit programmable (4-in/4-out)
FAN	CPU Fan connector(s) (4-pin) x 1, Chassis Fan connector(s) (4-pin) x 1
Power	4-pin connector x 1
Others	—

OS

OS Support	Windows® XP, Windows® 7 32/64-bit, Linux Fedora
------------	---

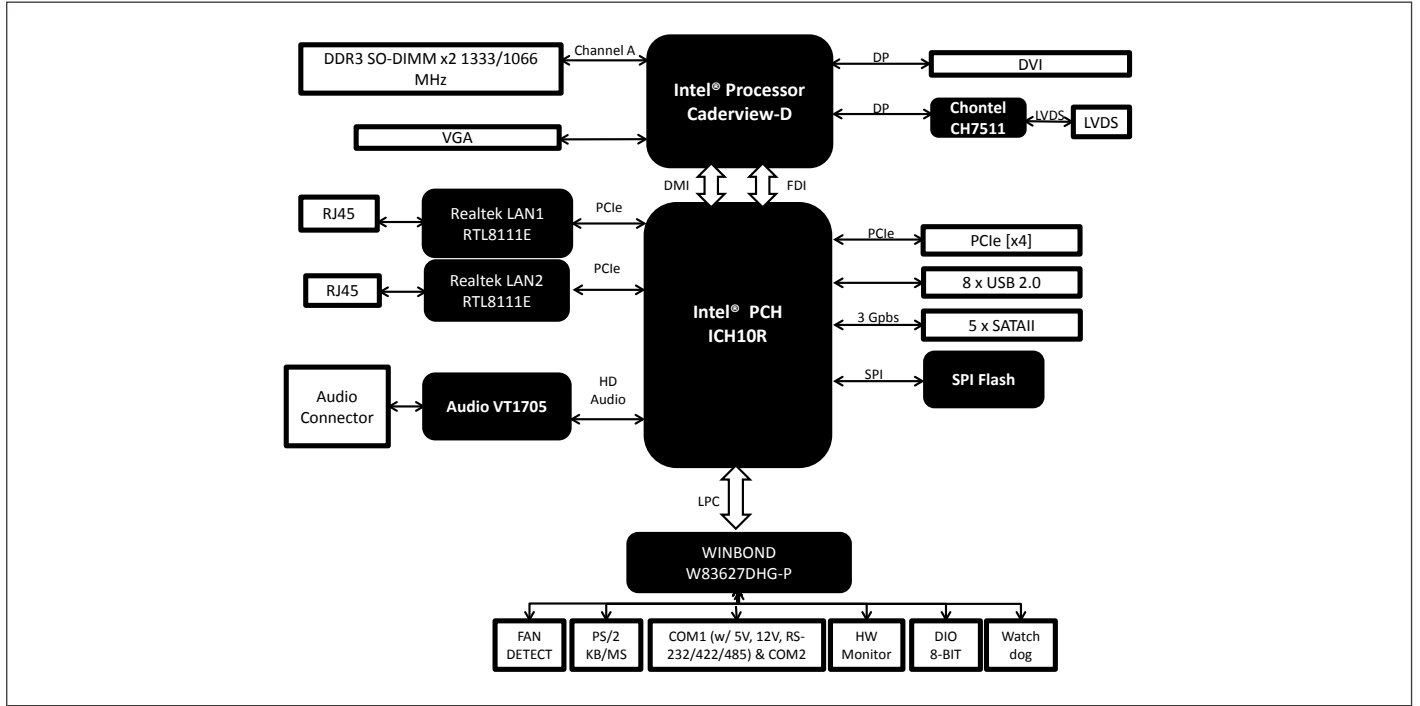
Packing List

- **M20CV10000**
(TF)Metal, Sus, I/O Shield, Rev.0.0, EMB-CV1, Kuangying, IOA-02175-01
- **1709070800**
(TF)SATA Cable, 7P Pitch 1.27mm, 80cm, w/Lock
- **1702151201**
(TF)Power Cable, 4P 2.5mm Housing, 15P SATA (F), 12cm, for FWS-2150
- **9657666600**
(TF)Accessory, for All Series Jumper
- **Product DVD**
- **EMB-CV2**

Optional Accessories

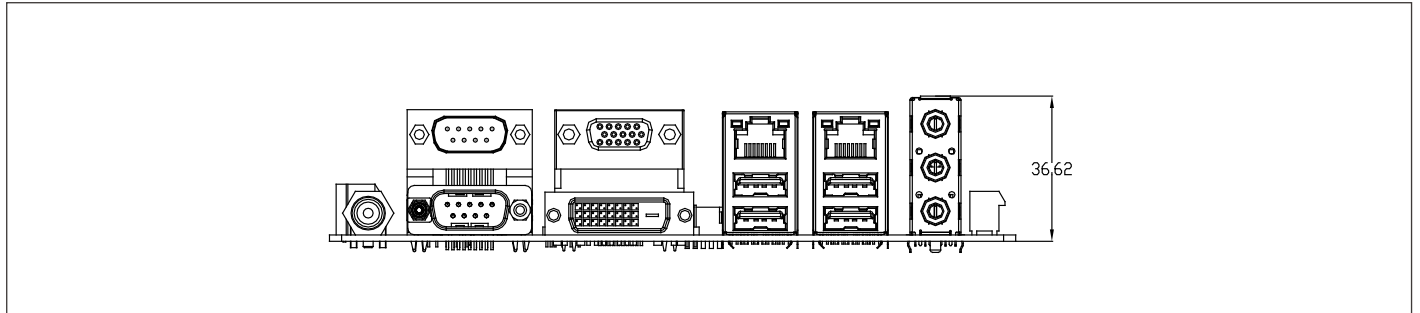
- **1709070800**
(TF)SATA CABLE, 7P Pitch 1.27mm, 80cm, W/Lock
- **1702151201**
(TF)Power Cable, 4P 2.5mm Housing, 15P SATA (F), 12cm
- **9657666600**
(TF)Accessory, for All Series Jumper
- **1709100201**
(TF)USB Cable, 20cm 2.0mm, w/Bracket
- **1701100206**
(TF)Flat Cable, 9P DB 9P MALE, 10P 2.00mm Pitch Housing, 20cm

Block Diagram



Dimension

Unit: mm



Ordering Information

Part number	CPU	RAM	Fan/Fanless	Display	Storage	LAN	USB	RS-232	RS-232/422/485	Expansion Slot	Power	TPM	Temp.
EMB-CV2-A10	D2550	DDR3 4GB	Fanless	VGA/DVI-D	SATA3 x 2, mPCIe x 1, mSATA x 1	GbE x 2	USD3.0 x 2, USB 2.0 x 5	1	1	PCIe [x4] x 1, mPCIe x 1	+12V DC	-	32°F ~ 140°F (0°C ~ 60°C)