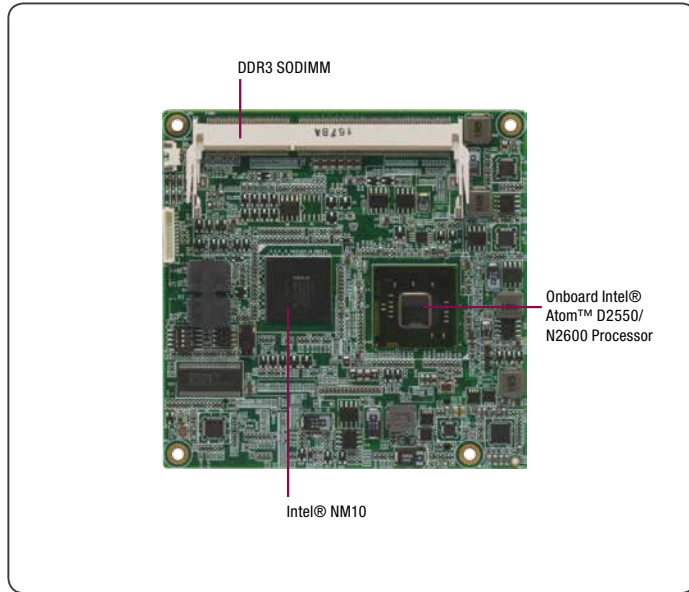


# 06 COM-CV Rev. A11

## COM Express Type 2 CPU Module with Onboard Intel® Atom™ D2550/N2600 Processor



### Features

- Intel® Atom™ D2550/N2600 Processor
- Intel® NM10
- DDR3 1066/800 MHz SODIMM x 1, Up to 4 GB
- Gigabit Ethernet x 1
- 18/24-bit Dual-Channel LVDS LCDs
- High Definition Audio Interface
- SATA 3.0 Gb/s x 2, PATA x 1 (Shared with SATA)
- USB 2.0 x 8, GPIO 8-bit, PCI-Express [x1] x 3, 32-bit PCI x 2
- COM Express Pin-out Type 2
- 95mm x 95mm, COM.0 Rev. 2.0

### Specifications

System	
Form Factor	COM Express, Compact, Pin-out Type 2
CPU	Onboard Intel® Atom™ D2550/N2600 Dual Core Processors up to 1.86 GHz
CPU Frequency	Up to 1.86 GHz
Chipset	Intel® NM10
Memory Type	DDR3 1066, SODIMM x 1
Max. Memory Capacity	Up to 4 GB
BIOS	AMI BIOS
Wake on LAN	Yes
Watchdog Timer	255 Levels
Power Requirement	Nominal: +12V
Power Supply Type	AT/ ATX
Power Consumption (Typical)	Intel® D2550 1.86 GHz, DDR3 1066/4GB, 1.21A@+12V
Dimension (L x W)	3.74" x 3.74" (95mm x 95mm)
Operating Temperature	32°F ~ 140°F (0°C ~ 60°C)
Storage Temperature	-40°F ~ 176°F (-40°C ~ 80°C)
Operating Humidity	0% ~ 90% relative humidity, non-condensing
MTBF (Hours)	80,000
Certification	CE/FCC
Display	
VGA/LCD Controller	Intel® Atom™ D2550/N2600 Processor integrated
Video Output	CRT/ LVDS LCD
Backlight inverter supply	—
I/O	
Ethernet	Intel® 82583V, Gigabit Ethernet
Audio	High Definition Audio Interface
USB Port	USB 2.0 x 8
Serial Port	From LPC interface
Parallel Port	From LPC interface
HDD Interface	SATA 2 x 4, PATA x 1
FDD Interface	—
SSD	—
Expansion Slot	PCI-Express [x1] x 3, 32-bit PCI x 2 LPC Bus x 1 SM Bus x 1
DIO	GPIO 8-bit
TPM	—



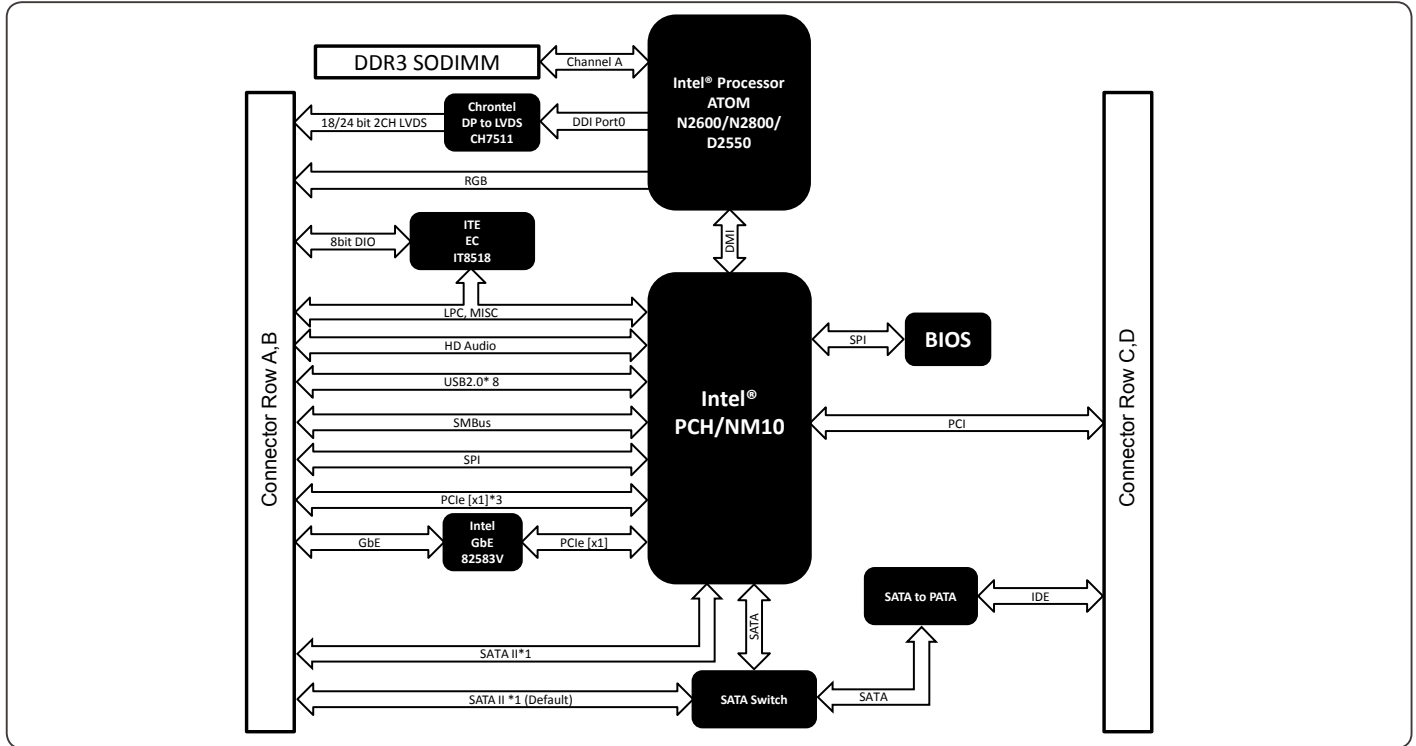
### Packing List

- M2.5 Screw x 4
- Product CD
- COM-CV Rev. A11

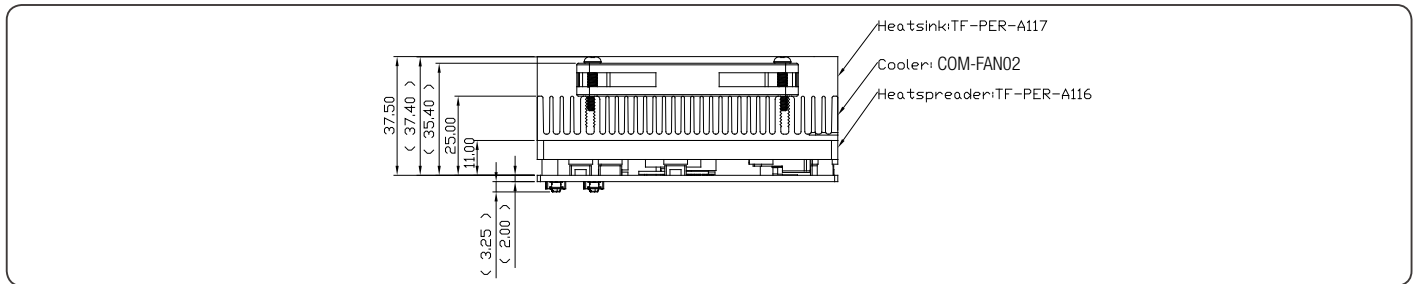
### Optional Accessories

- **TF-ECB-916M-B11-01**  
COM Express Carrier Board, microATX, Dual Ethernet, 2 COM (Winbond), USB, PCI-Express, AT/ATX, Rev. B1.1
- **TF-PER-A116**  
Heat Spreader, For COM-CV
- **TF-PER-A117**  
Passive Heatsink, to be used with Heat Spreader
- **COM-FAN02**  
CPU Cooler, 95 x 95 x 26.5mm, Silver, use with HSP

## Block Diagram Unit: mm



## Dimension Unit: mm



## Ordering Information

Part Number	COM Express Type	CPU	Memory	Display	LVDS	Storage	LAN	USB	UART	Expansion Slot	Power	Temp
COM-CV-A11-01	2 (COM.0 Rev.2.0)	Intel® Atom™ N2600/B3/1.6 GHz	DDR3 SODIMM x 1 up to 2 GB	CRT, LVDS	18/24b, 2CH	SATA2 x 2 PATA x 1	GbE x 1	USB2.0 x 8	—	PCI-E [x1] x 3 32-bit PCI x 2	12V	0°C ~ 60°C
COM-CV-A11-02	2 (COM.0 Rev.2.0)	Intel® Atom™ D2550/B3/1.86 GHz	DDR3 SODIMM x 1 up to 4 GB	CRT, LVDS	18/24b, 2CH	SATA2 x 2 PATA x 1	GbE x 1	USB2.0 x 8	—	PCI-E [x1] x 3 32-bit PCI x 2	12V	0°C ~ 60°C

Note:  
Intel® Atom™ Processor D2000 series and N2000 series (CV) do NOT support DMA function that may affect ECP mode of Parallel port.