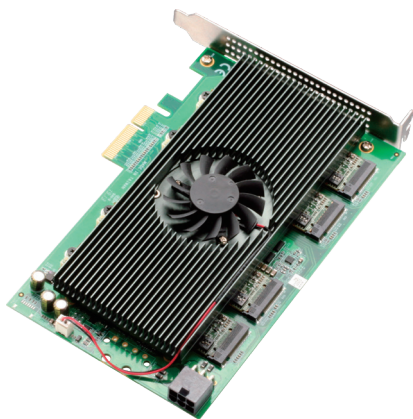
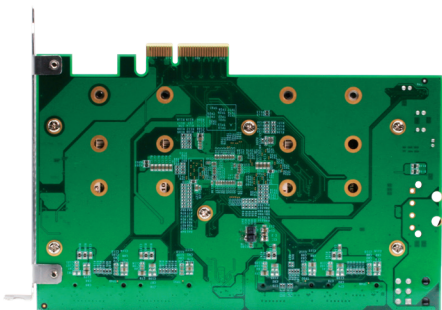
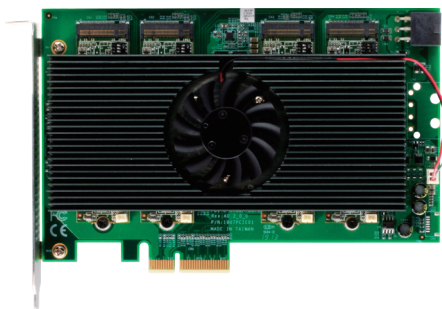


AI Core XP4/XP8

AI Edge Computing Module with Intel® Movidius™ Myriad™ X VPU



Features

- PCIe x 4 Standard Full Length Low Profile Slot Card
- Supports 4 x M.2 2280 M-Key
- Intel® Movidius™ Myriad™ X VPU
- Intel® Vision Accelerator Design SW SDK
- Supported Framework: TensorFlow, Caffe, MXNET
- Ubuntu 16.04, Windows® 10



Specifications

System	
IC	Asmedia PCIe switch, Intel® Movidius™ Myriad™ X VPU
Support frame work	Tensorflow, Caffe, MXNET
Others	
Form Factor	PCIe x 4 card, full length, low profile
Dimension	4.37" x 6.57" (111 mm x 167 mm)
Certification	CE/FCC Class A
Operating Temperature	32°F ~ 122°F (0°C ~ 50°C)
Operating Humidity	10% ~ 80% relative humidity, non-condensing

Packing List

- AI Core XP4/XP8

Ordering Information

Part Number	Description
PER-TAIX4-A10-PCIE	AI Core PCIe x 4 with 2 x AI Core XM 2280, fan heatsink
PER-TAIX8-A10-PCIE	AI Core PCIe x 4 with 4 x AI Core XM 2280, fan heatsink