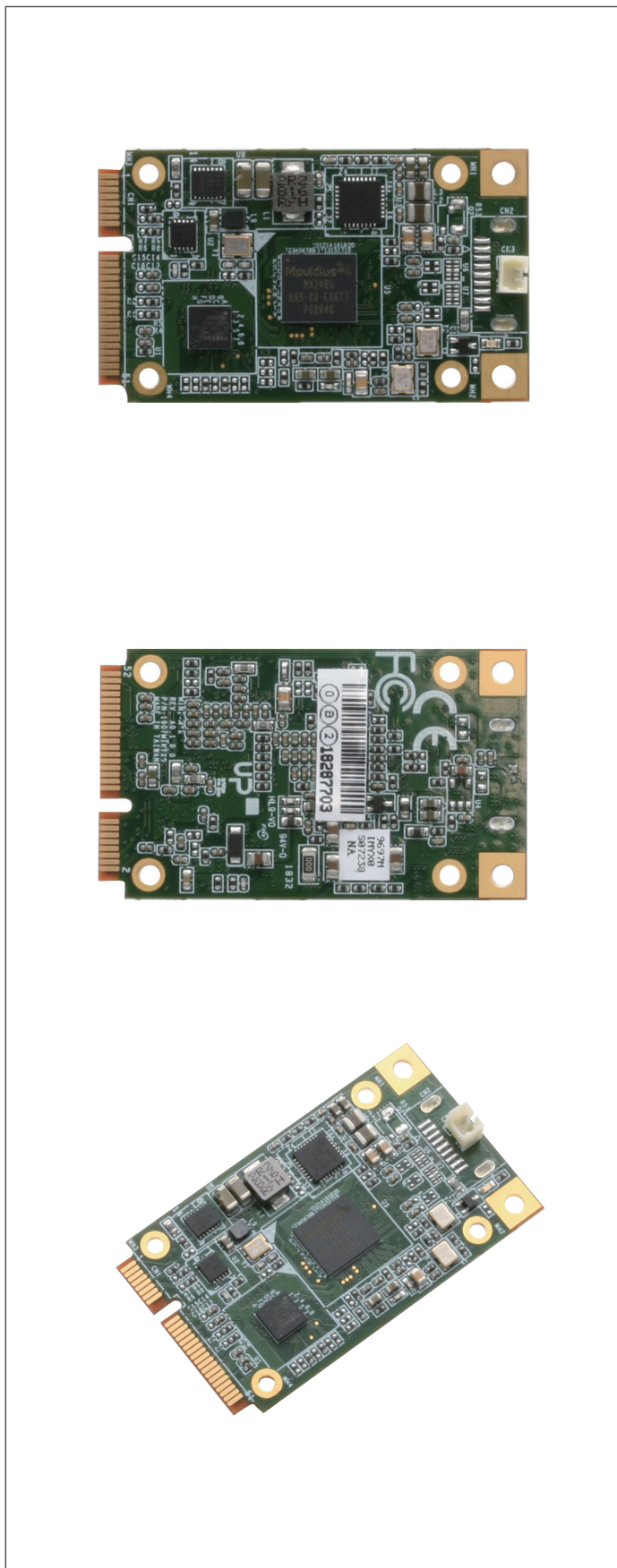


AI Edge Computing Board with Intel® Movidius™ Myriad™ X VPU, MYDX x 1



Features

- Intel® Movidius™ Myriad™ X VPU
- 1x MYDX on mPCIe
- Intel® Vision Accelerator Design SW SDK
- Supported Framework: TensorFlow, Caffe, MXNET
- Ubuntu 16.04, Windows® 10



Specifications

System	
IC	Intel Movidius Myriad X VPU, MA2485
Support frame work	Tensorflow, Caffe, MXNET
Others	
Form Factor	Mini PCIe
Dimension	51 x 30 mm
Certification	CE/FCC Class A
Operating Temperature	0~60°C
Operating Humidity	10%~80%RH, non-condensing

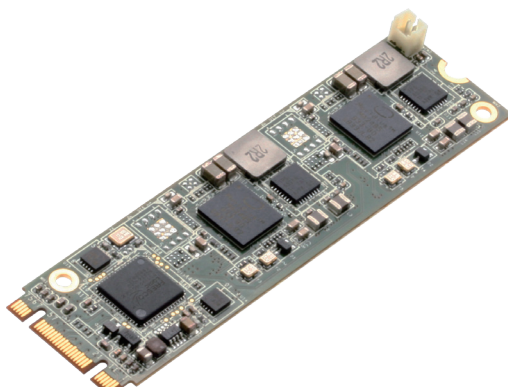
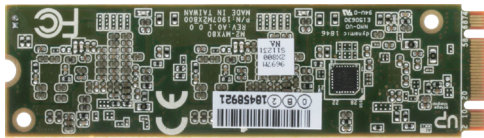
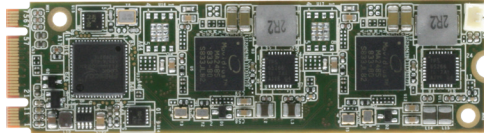
Packing List

- AI Core X module card x 1
- M2 screw x 1

Ordering Information

Part Number	Description
PER-TAICX-A10-001	AI CORE Movidius Myriad X 2485. PCIe interface.Rev.A1.0

AI Edge Computing Board with Intel® Movidius™ Myriad™ X VPU, MYDX x 2



Features

- Intel® Movidius™ Myriad™ X VPU
- 2x MYDX on M.2 2280 B+M key
- Intel® Vision Accelerator Design SW SDK
- Supported Framework: TensorFlow, Caffe, MXNET
- Ubuntu 16.04, Windows® 10



Specifications

System	
IC	2 x Intel Movidius Myriad X VPU, MA2485
Support frame work	Tensorflow, Caffe, MXNET
Others	
Form Factor	M.2 2280 B+M KEY
Dimension	80 x 22 mm
Certification	CE/FCC Class A
Operating Temperature	0~50°C
Operating Humidity	10%~80%RH, non-condensing

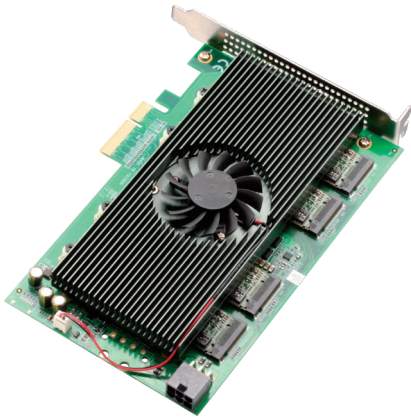
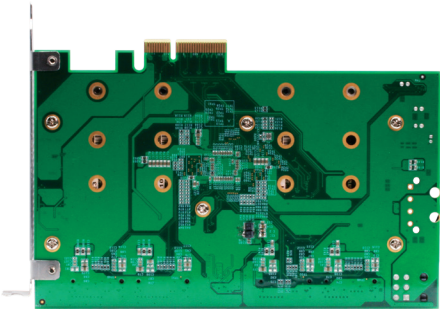
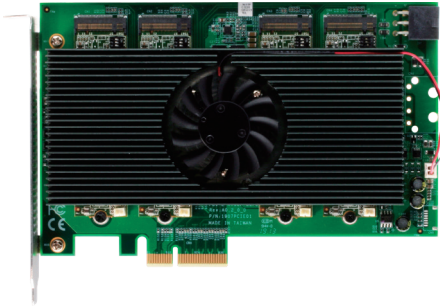
Packing List

- AI Core XM module card x 1
- M3 screw x 1

Ordering Information

Part Number	Description
PER-TAIX2-A10-2280	AI CORE Movidius Myriad X 2485.M.2 2280 B+M key.Rev.A1.0

AI Edge Computing Board with Intel® Movidius™ Myriad™ X VPU, MYDX x 4/8



Features

- PCIe x 4 Standard Full Length Low Profile Slot Card
- Supports 4 x M.2 2280 M-Key
- Intel® Movidius™ Myriad™ X VPU
- Intel® Vision Accelerator Design SW SDK
- Supported Framework: TensorFlow, Caffe, MXNET
- Ubuntu 16.04, Windows® 10



Specifications

System	
IC	Asmedia PCIe switch
Support frame work	Tensorflow, Caffe, MXNET
Others	
Form Factor	PCIe x 4 card, full length, low profile
Dimension	111 x 167 mm
Certification	CE/FCC Class A
Operating Temperature	0~50°C
Operating Humidity	10%~80%RH, non-condensing

Packing List

- AI Core XP4/XP8

Ordering Information

Part Number	Description
PER-TAIX4-A10-PCIE	AI Core PCIe x 4 with 2 x AI Core XM 2280, fan heatsink
PER-TAIX8-A10-PCIE	AI Core PCIe x 4 with 4 x AI Core XM 2280, fan heatsink