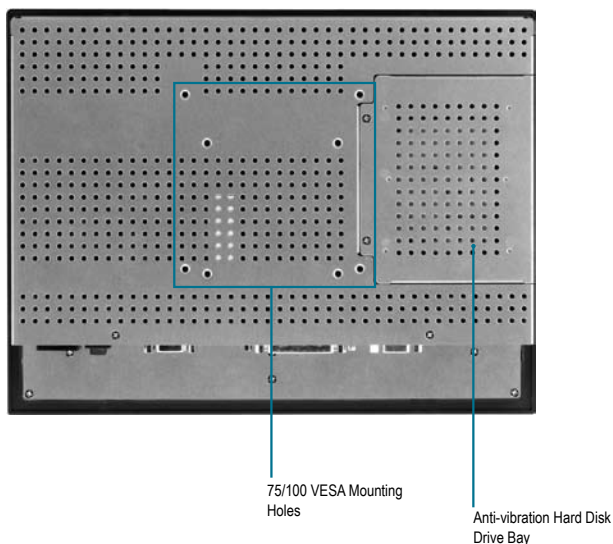
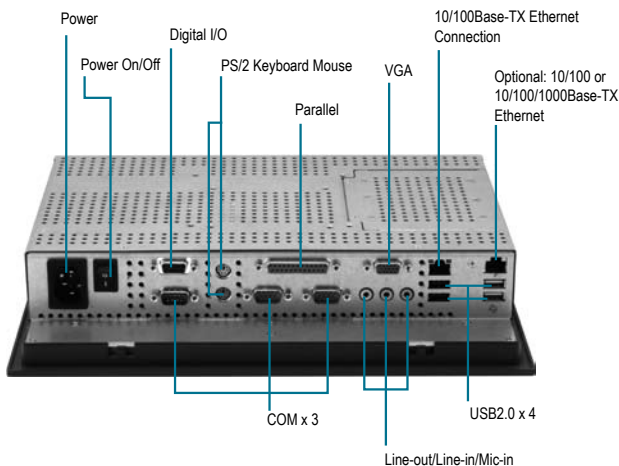
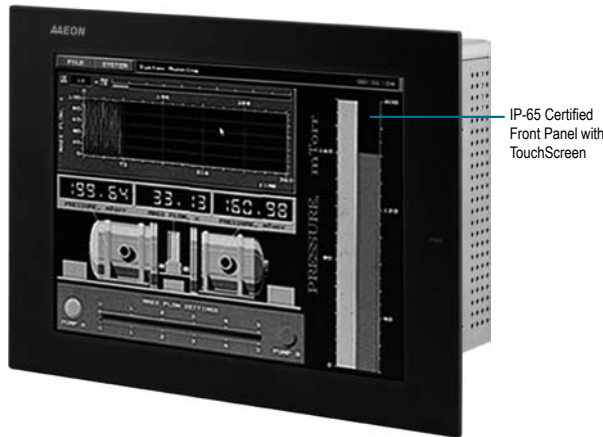


■ 12" Ultra Low Voltage Intel® Pentium®/ Celeron® M Processor-Based Fanless Operator Panel PC



## Features

- Onboard Intel® Celeron® M Low Power CPU
- 12.1" SVGA Color TFT LCD Display With Touch Control
- Windows® 2000, XP Pro For Embedded, XP Embedded Support
- Second LAN 10/100Base-TX Or Gigabit Ethernet Support (Optional)
- Fanless Solution (Celeron® M 600 MHz)



## Specifications

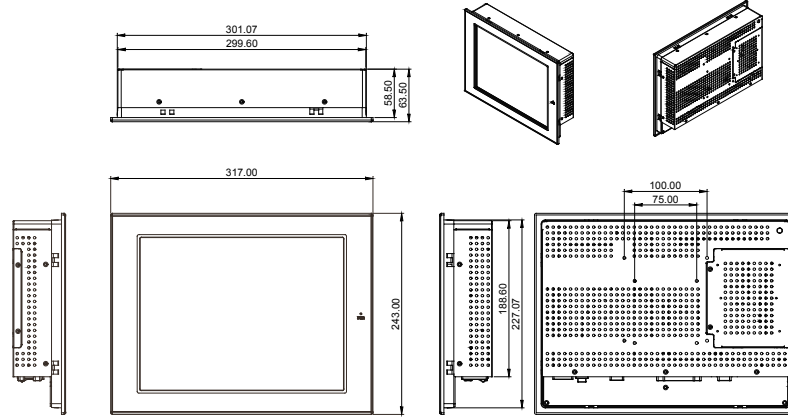
System	
Processor	Intel® Pentium® M 1.6 GHz or Celeron® M 1.3 GHz / 600 MHz (Fanless processor)
Memory (Optional)	Onboard 512/256 MB (up to 1 GB)
LCD/CRT Controller	Intel® 852GM + Chrontel 7009
Ethernet	10/100Base-TX RJ-45 x 1, 10/100 or 10/100/1000Base-TX RJ-45 x 1 (optional)
I/O Port	RS-232 x 2, RS-232/422/485 x 1, Mic-in/Mic-out/Line-in parallel x 1, PS/2 mouse x 1, PS/2 keyboard x 1, VGA x 1, USB2.0 x 4 Digital I/O (Supports up to 8 in or 8 out)
Storage Disk Drive (Optional)	2.5" Hard Disk Drive bay (Anti-vibration), CompactFlash™ (internal)
Expansion Slot	Mini-PCI Slot x 1 (Internal)
OS Support	Windows® 2000, Windows® XP Pro for Embedded, Windows® XP Embedded
Mechanical	
Construction	IP-65 certified Panel with metal back cover
Front Panel Color	PMS 2965C (Dark Blue)
Mounting	Panelmount, VESA 75/100mm
Dimension	12.5" (W) x 9.6" (H) x 2.5" (D) (317mm x 243mm x 64mm)
Carton Dimension	16.6" (W) x 7.7" (H) x 15.9" (D) (422mm x 196mm x 404mm)
Gross Weight	9.9 lb (4.5 kg)
Net Weight	7.7 lb (3.5 kg)
Environmental	
Operating Temperature	32°F ~ 104°F (0°C ~ 40°C)
Storage Temperature	-4°F ~ 140°F (-20°C ~ 60°C)
Storage Humidity	10% to 90% @ 40°C, non-condensing
Vibration	1.0G Random Operation, 5~500Hz
Shock	15G peak acceleration (11m sec. duration) / operation
Safety	UL60950 Mark
EMC	CE/FCC Class A
Power Supply	
Power Input	AC 100~240V/DC48V input
LCD	
Display Type	12.1" TFT LCD
Max. Resolution	1024 x 768
Max. Colors	262K
Dot Size	0.3075mm x 0.3075mm
Luminance (Typical)	200 cd/m <sup>2</sup>
Viewing Angle	90°(H) / 70°(V)
TouchScreen	
Type	8-wire, Analog Resistive
Resolution	2048 x 2048
Light Transmission	>78%
Lifetime	1 million activations

# AOP-8120XT

## Dimension

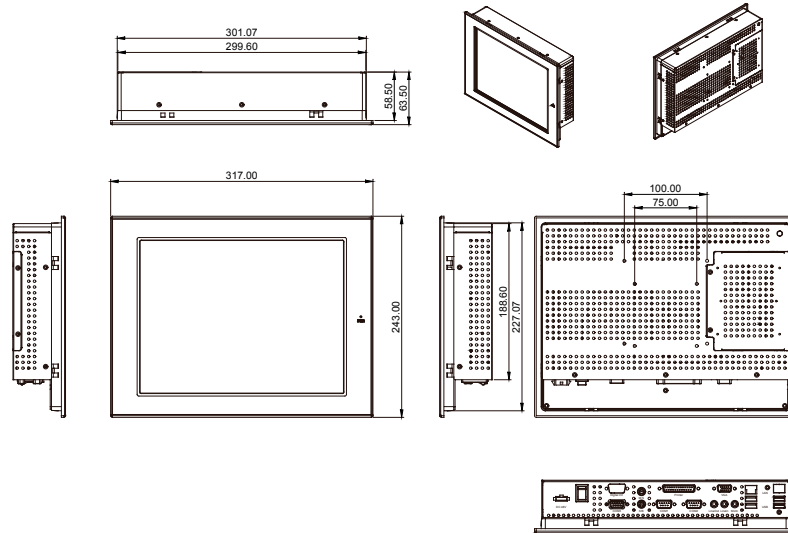
Unit: mm

### AOP-8120XT



Cutout Size: 304 x 230 mm  
Dimension: 317 x 243 x 64 mm

### AOP-8120XT-DC



## Ordering Information

- **TF-AOP-8120XT-A1-1110**  
Operator Panel, Pentium® M1.6 GHz, 12" TFT, AC, R-TS, 512 MB RAM
- **TF-AOP-8120XT-A2-1110**  
Operator Panel, Celeron® M 1.3 GHz, 12" TFT, AC, R-TS, 256 MB RAM
- **TF-AOP-8120XT-A3-1110**  
Fanless Operator Panel, Celeron® M 600 MHz, 12" TFT, DC 48V, R-TS, 256 MB RAM
- **TF-AOP-8120XT-A4-1110**  
Fanless Operator Panel, Celeron® M 600 MHz, 12" TFT, AC, R-TS, 256 MB RAM
- **TF-AOP-8120XT-A5-1110**  
Fanless Operator Panel, Celeron® M 600 MHz, 12" TFT, AC, R-TS, 256 MB RAM, Dual LAN

## Optional Accessories

- **ARM-WK075-0**  
Wallmount Kit with VESA 75/100mm Standards
- **ARM-DR075-0**  
DIN Rail Kit with VESA 75mm Standards
- **STAND-8150B0**  
Desktop Stand with VESA 100mm Standards
- **9741666646**  
(TF)Wireless LAN Kit, IEEE 802.11b/g, With Internal Cable and Antenna