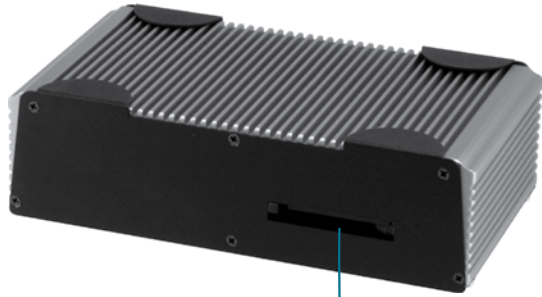
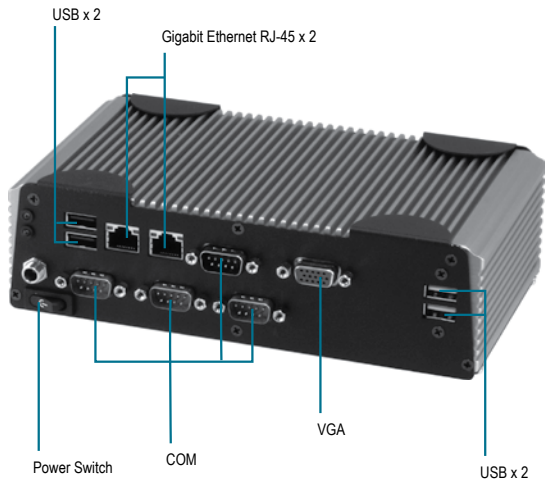


AEC-6612

Fanless Controller With Intel® Atom™ D510 Processor



CompactFlash™ Slot



Features

- Intel® Atom™ D510 Processor
- Up To COM x 6, USB x 6
- Fanless Operation
- 9 ~ 30V DC Input (Optional)
- PCI-Express Mini Card x 2
- SATA Hard Disk Drive Bay Inside
- ATX/ ACPI Power Mode



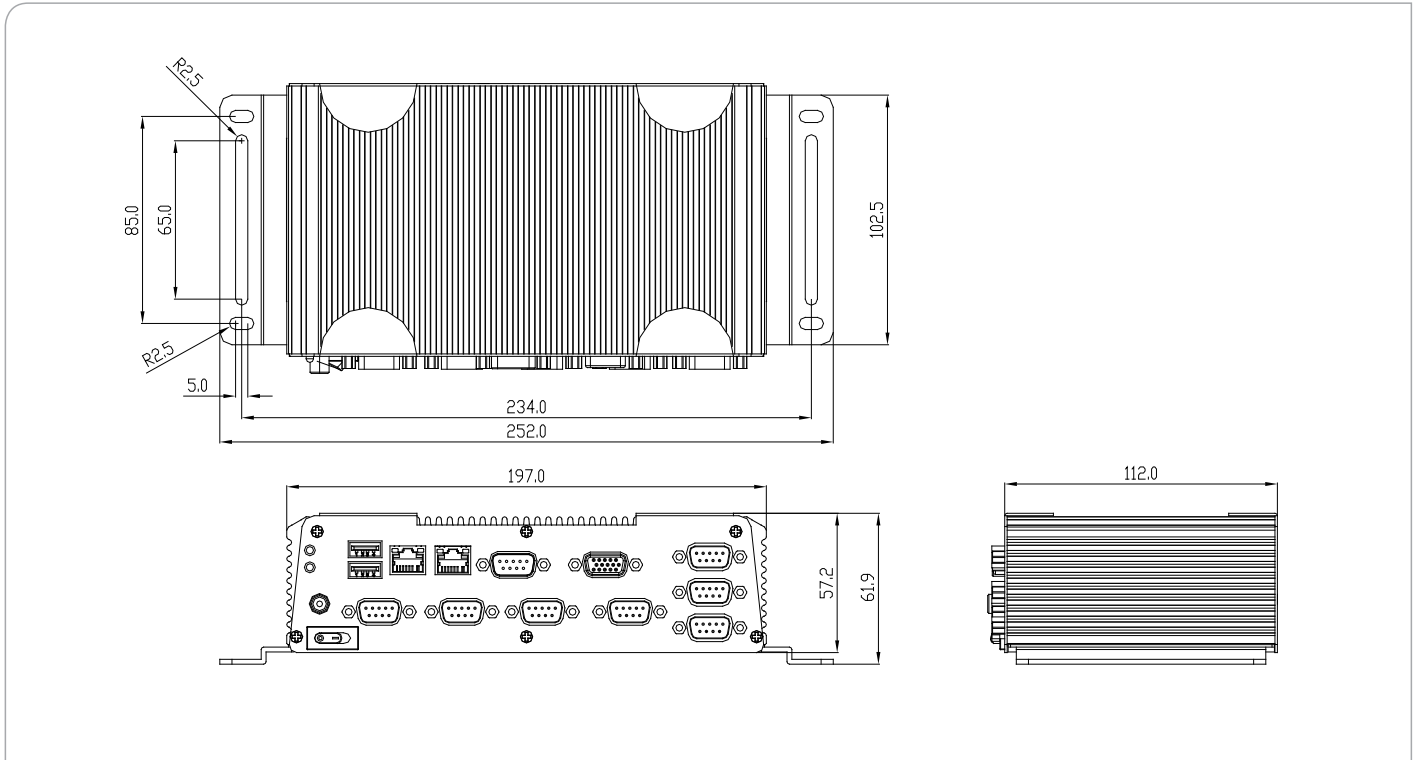
Specifications

CPU	Intel® Atom™ D510 1.66GHz	
Chipset	ICH8M	
System Memory	DDR2 SDRAM SODIMM x 1, Max. 2 GB	
Display Interface	VGA	DB-15 x 1, shared system memory up to 384MB
	DVI	—
	Others	2nd VGA x 1 (Optional extension kit)
Storage Device	SSD	CompactFlash™ Slot
	HDD	2.5" SATA 1.5Gb/s Slim Hard Disk Drive Bay
Network	LAN	Gigabit Ethernet, RJ-45 x 2
	Wireless	—
Front I/O	USB Host	USB2.0 x 2 (TF-AEC-6612-A1/A1M-1010), USB2.0 x 6 (TF-AEC-6612-A2/A2M-1010)
	LAN	RJ-45 x 2
	Serial Port	RS-232/422/485 x 1, RS-232 x 1 (TF-AEC-6612-A1/A1M-1010), RS-232 x 5 (TF-AEC-6612-A2/A2M-1010)
	DIO	—
	Audio	—
	KB/MS	—
	Others	Power Switch x 1, Reset Button x 1, Power inlet x 1
	Power Switch	—
Rear I/O	USB Host	—
	LAN	—
	Serial Port	—
	DIO	—
	Audio	—
	KB/MS	—
Others	CompactFlash™ slot x 1	
Expansion	PCIe [x1]	—
	PCI	—
	Mini Card	2
	Mini PCI	—
	Others	—
Indicator	Front	Power LED x 1, Hard Disk Drive LED x 1
	Rear	—
Power Requirement	DC-in 9~30V/ DC-in 12 V input	
Power Consumption	Intel® Atom™ D510, 1.18A@12V	
System Cooling	Passive Cooling	
Mounting	Wallmount	
Operating Temperature	Ambient with Airflow	No Airflow
	-4°F ~ 122°F (-20°C ~ 50°C) - CFD -4°F ~ 140°F (-20°C ~ 60°C) - HDD	
Storage Temperature	-4°F ~ 140°F (-20°C ~ 60°C)	
Anti-Vibration	5 g rms/ 5 ~ 500Hz/ operation - CFD, 1 g rms/ 5 ~ 500Hz/ operation - HDD	
Anti-Shock	50 G peak acceleration (11 msec. duration) - CFD 20 G peak acceleration (11 msec. duration) - HDD	
MTBF	50,000	
Certification	EMC	CE /FCC Class A
	Safety	—

AEC-6612

Dimension

Unit: mm



Dimension (W x H x D)	7.76" (w) x 2.44" (H) x 4.41" (D) (197mm x 57mm x 112mm)
Gross Weight	4.31 lb (1.96 Kg)
Note	Windows® XP Embedded, Windows® XP, Windows® 7, Linux Fedora 2.4 Support

Ordering Information

- **TF-AEC-6612-A1-1010**
Embedded Controller, Intel® Atom™ D510, 2 COM, 2 USB, DC12V
- **TF-AEC-6612-A2-1010**
Embedded Controller, Intel® Atom™ D510, 6 COM, 6 USB, DC12V
- **TF-AEC-6612-A1M-1010**
Embedded Controller, Intel® Atom™ D510, 2 COM, 2 USB, DC9~30V
- **TF-AEC-6612-A2M-1010**
Embedded Controller, Intel® Atom™ D510, 6 COM, 6 USB, DC9~30V

Optional Accessories

- **1757912001**
DC 19V 120W AC adapter for Power input 9-30 V
- **1702031802**
Power cord (US type) for 1757912001
- **1702031803**
Power cord (Europe type) for 1757912001
- **170203180E**
Power cord (Japan type) for 1757912001
- **1757306004**
DC 12V 60W AC adapter for power input 12V
- **1702031830**
Power cord (US type) for 1757306004
- **1702031831**
Power cord (Europe type) for 1757306004
- **1702031810**
Power cord (Japan type) for 1757306004
- **VGA Extension Kit**