

Backplane Cable

11

Accessories - Backplane Cable/ CPU Cooler

1703040101

Chassis to Backplane for Speaker



Ordering Information

- **1703040101**
Wire, 2.54mm, 2P, Housing to 2.54mm, 4P Header (M), 10cm, Speaker

1703060502

ATX Connector Cable From CPU (5-pin ATX Feature Connector) Card to Backplane (3-pin ATX Feature Connector)



Ordering Information

- **1703060502**
WIRE, 2.54mm, 3P, Housing to 2.0mm, 6P, Housing, 50cm (ATX)

1702030301

ATX Power Simulation AT Power Switch Wire



Ordering Information

- **1702030301**
POWER Cable, 2.54mm, 3P, Housing to PIN TERMINAL x 2(big), 30cm ATX to AT

1702030302

Backplane to AT Power Supply



Ordering Information

- **1702030302**
POWER Cable, 2.54mm, 3P, Housing to PIN TERMINAL x 2 (small), 30cm, ATX to AT

1702200500

Backplane to ATX Power Supply



Ordering Information

- **1702200500**
POWER Cable, ATX Connector, 20P (F) to AT Connector, 12P, PIN TERMINAL x 2 (big), 50cm

1703020104

Chassis to Backplane for Reset/ Power Button



Ordering Information

- **1703020104**
WIRE, 2.0mm, 2P, Housing to 2.54mm, 2P Header (M), 10cm Reset/ Power button

1703050500

Backplane Cable for Keyboard Connector

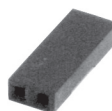


Ordering Information

- **1703050500**
WIRE, 2.54mm, 5P, Housing to 2.54mm, 5P, Housing, 50cm, Keyboard

1656002000

Chassis to CPU Card for Speaker Connection



Ordering Information

- **1656002000**
Housing, 2P, 180D, 2.54mm, w/o LOCK