

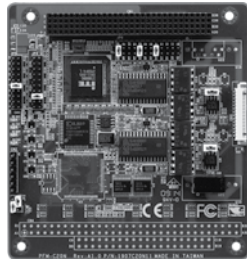
PFM-C20N

Communication Modules

PC/104 Board Dual CAN Bus Module



PC/104



PCI-104

Specifications

Form Factor	PC/104
Chipset	SJA1000
Power Requirement	+3.3V and +5V
Operating Temp.	32°F ~ 140°F (0°C ~ 60°C)
Board Size	3.55" (L) x 3.77" (W) (90mm x 96mm)

Features

- SJA1000 Based CAN Interface Module
- CAN2.0 Compatible up to 1 Mbps
- Onboard Switch Selectable CAN Termination
- Supports Windows® XP and Linux
- PC/104 or PCI-104 Interface
- Isolating Voltage up to 1600VDC

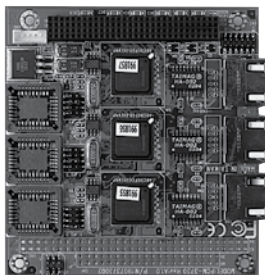
Ordering Information

- **TF-PFM-C20N-A10**
PC/104 Board Dual CAN Bus, Module, SJA1000, PC/104 Rev. A1.0
- **TF-PFM-C20N-A10-01**
PC/104 Board Dual CAN Bus, Module, SJA1000, PCI-104 Rev. A1.0

PCM-3730

Communication Modules

PCI-104 Triple Ethernet Module



Specifications

Chipset	Intel® 82551ER
Speed	Supports 10/100Base-TX, auto-negotiation
Protocol	Supports Priority Packet (IEEE 802.1p) and Virtual LAN support (IEEE 802.1Q) Supports 100Base-TX Flow Control (IEEE 802.3x)
Power Management	ACPI and PCI Power Management
Operating Temperature	32°F ~ 140°F (0°C ~ 60°C)

Features

- PCI-104 Interface
- 10/100Base-TX Ethernet x 3
- RJ-45 Connectors
- Wake-on-LAN Function

Ordering Information

- **TF-PCM-3730-A10-01**
PCI-104 Board Triple 10/100Base-TX Ethernet Module Rev. A1.0