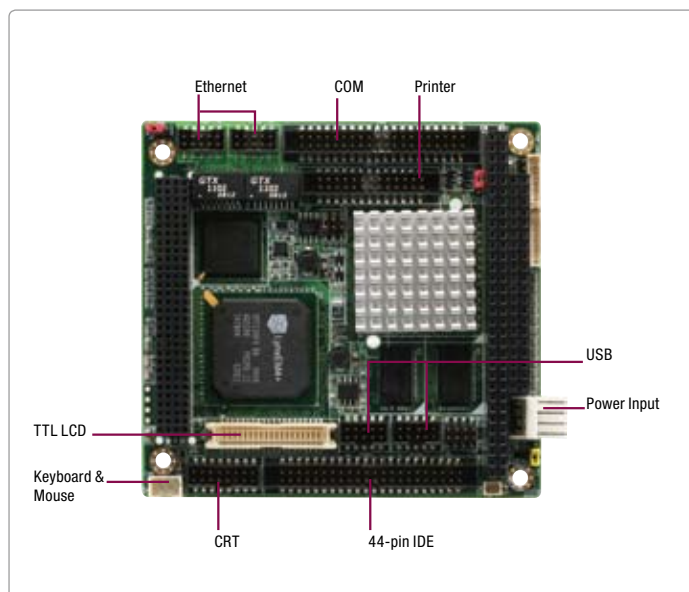


# PFM-535S

PC/104 Module with DM&P® Vortex86SX®/Vortex86DX® SoC Processor

04

PC/104 Modules



## Features

- Onboard DM&P® Vortex86SX®/Vortex86DX® SoC Processor
- Onboard DDR2 Memory 256 MB
- 10/100Base-TX Ethernet x 2
- CRT & Up To 24-bit TTL LCD
- EIDE x 1, CompactFlash™ x 1
- USB2.0 x 4, COM x 4, Parallel x 1 (Optional)
- PC/104+ Expansion
- +5V Only Operation, AT Power Type

## Specifications

| System                      |  |
|-----------------------------|--|
| Form Factor                 | PC/104   |
| Processor                   | Onboard DM&P® Vortex86SX® SoC (300 MHz)/ Vortex86DX® SoC (1 GHz) Processor |
| System Memory               | Onboard DDR2 Memory – 256 MB   |
| Ethernet                    | Vortex86SX®/DX® MAC controller + Intel® 82551ER, 10/100Base-TX x 2         |
| BIOS                        | AMI - 256 KB ROM   |
| Watchdog Timer              | Generates a time-out system reset  |
| H/W Status Monitoring       | Supports power supply voltages and temperature monitoring                  |
| Expansion Interface         | PC/104+  |
| Battery                     | Lithium battery  |
| Power Requirement           | +5V/ AT  |
| Power Consumption (Typical) | Vortex86DX® 256 MB<br>1.82A@+5V  |
| Board Size                  | 3.55" (L) x 3.77" (W) (90mm x 96mm)  |
| Gross Weight                | 0.33 lb (0.15 Kg)  |
| Operating Temperature       | 32°F ~ 140°F (0°C ~ 60°C)  |
| Storage Temperature         | -40°F ~ 176°F (-40°C ~ 80°C)   |
| Operating Humidity          | 0% ~ 90% relative humidity, non-condensing                                 |
| MTBF (Hours)                | 129,000  |
| Display                     |  |
|                             | Supports CRT/LCD simultaneous/ dual view display                           |
| Chipset                     | SMI712GF4  |
| Resolution                  | Up to 1280x 1024 @ 85Hz colors for CRT<br>Up to 1024 x 768 for LCD         |
| LCD Interface               | Up to 24-bit TTL LCD   |
| I/O                         |  |
| Storage                     | EIDE x 1 (UDMA-100 for two devices), CompactFlash™ x 1                     |
| Serial Port                 | RS-232 x 3, RS-232/422/485 x 1   |
| Parallel Port               | SSP/EPP/ECP mode (optional)  |
| USB                         | USB2.0 x 4   |
| PS/2 Port                   | Keyboard+Mouse x 1   |



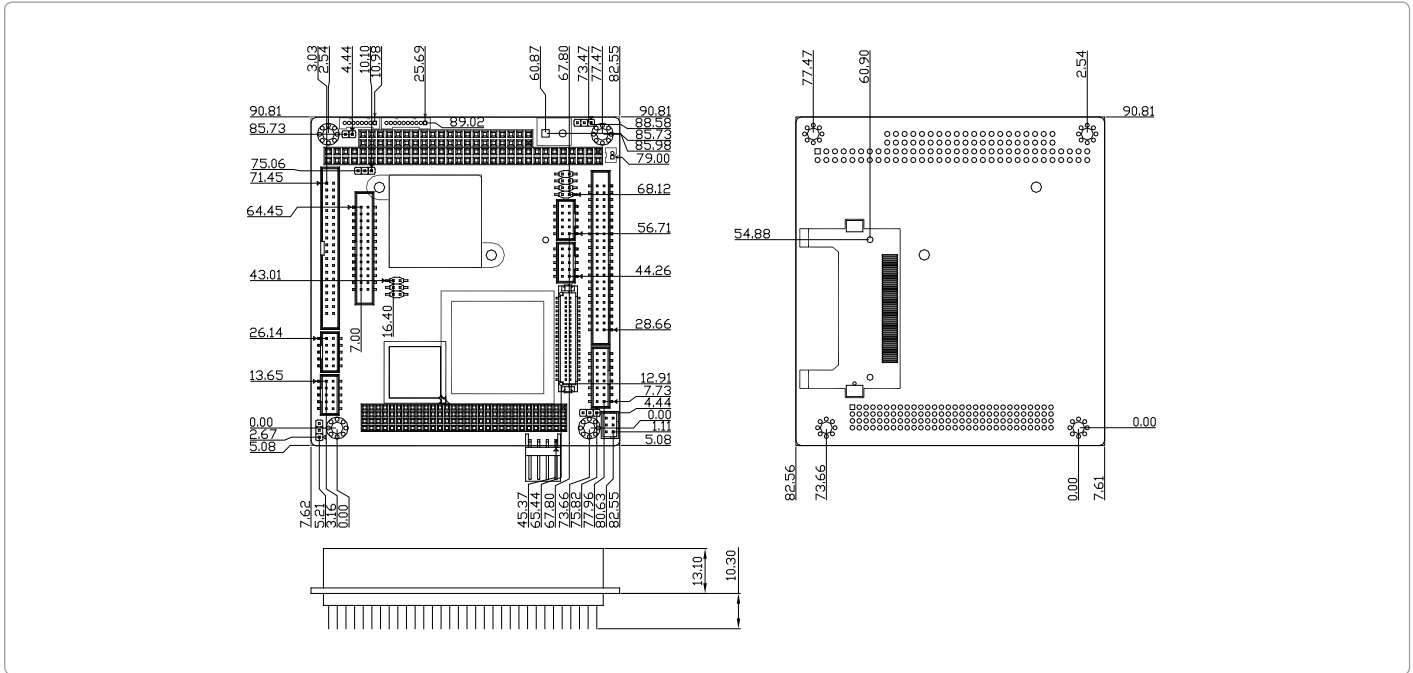
## Packing List

- **Cable Kit**
  - 1700060152 Keyboard & Mouse Cable
  - 1701160201 VGA Cable Product CD
- **Product CD**
- **PFM-535S with Heatsink**

# PFM-535S

## Dimension

Unit: mm



## Ordering Information

| Part Number        | CPU                | RAM   | Fan/ Fanless | Storage                     | Display   | LVDS     | LAN    | USB | RS-232 | RS-232/422/485 | Parallel | Expansion Slot | Power  | Temp.      |
|--------------------|--------------------|-------|--------------|-----------------------------|-----------|----------|--------|-----|--------|----------------|----------|----------------|--------|------------|
| TF-PFM-535S-A10    | Vortex86SX 300 MHz | 256MB | Fanless      | EIDE x 1, CompactFlash™ x 1 | CRT + TTL | 24b, 1CH | FE x 2 | 4   | 3      | 1              | 1        | PC/104+        | +5V/AT | 0°C ~ 60°C |
| TF-PFM-535S-A10-01 | Vortex86SX 300 MHz | 256MB | Fanless      | EIDE x 1, CompactFlash™ x 1 | CRT + TTL | 24b, 1CH | FE x 1 | 4   | 3      | 1              | —        | PC/104         | +5V/AT | 0°C ~ 60°C |
| TF-PFM-535S-A10-02 | Vortex86DX 1GHz    | 256MB | Fanless      | EIDE x 1, CompactFlash™ x 1 | CRT + TTL | 24b, 1CH | FE x 2 | 4   | 3      | 1              | 1        | PC/104+        | +5V/AT | 0°C ~ 60°C |

## Optional Accessories

- **PFM-P13DW2-A10**  
PC/104 Board Power Supply Module with +5V & +12V Output PC/104 Rev. A1.0 WITAS 2
- **1701400205**  
COM Cable, Length 20cm
- **1709100201**  
USB Cable, Length 20cm
- **1701260201**  
Printer Cable, Length 20cm
- **1700100201**  
LAN Cable, Length 20cm
- **1701080150**  
8-pin Front Panel, Length 15cm
- **1701010150**  
10-pin Front Panel, Length 15cm