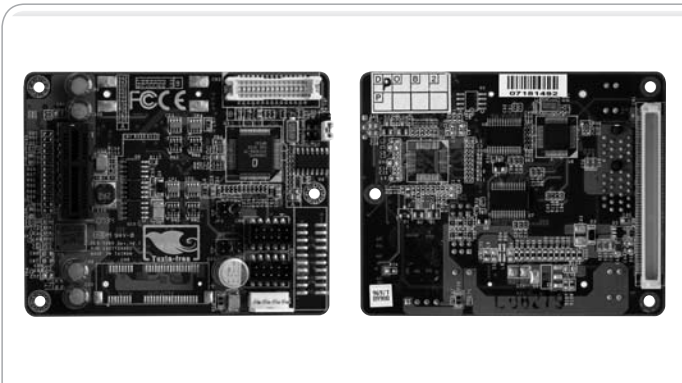


## ■ ECX Extension Board



## Specifications

Form Factor	ECX Extension Board (AAEON Proprietary)
Controller	Chrontel CH7308 (LVDS) / CH7307 (DVI)
LCD Interface	Up to 24-bit Dual channel LVDS TFT LCD (LVDS version)
DVI	DVI-D x 1 (DVI version)
Serial Port	RS-232 x 2
Expansion	PCI Express x 1 or Mini Card slot x 1
MTBF (Hours)	400,000
Board Size	3.2"(L) x 2.57"(W) (81.41 x 65.28 mm)

## Features

- PCI-Express [x1] (SINGLE LANE) Slot Or PCI-Express Mini Card Slot
- Up To 24-bit Dual-channel LVDS Or DVI Feature
- COM Port x 2 (RS-232)

## Packing List

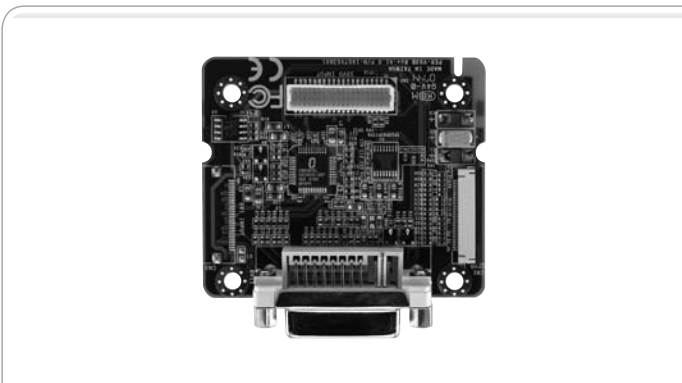
- PER-T099  
ECX Extension Board
- Quick Installation Guide
- CD-ROM for QIG (in PDF format) & BIOS
- 1701100206  
COM Port Cable
- 1700200200  
DVI Cable (For DVI version only)

## Ordering Information

- **TF-PER-T099-A10**  
ECX Extension Board, LVDS, PCI-E, 2 COM, Rev.A1.0
- **TF-PER-T099-A10-01**  
ECX Extension Board, LVDS, Mini Card, 2 COM, Rev.A1.0
- **TF-PER-T099-A10-02**  
ECX Extension Board, DVI, PCI-E, 2 COM, Rev.A1.0
- **TF-PER-T099-A10-03**  
ECX Extension Board, DVI, Mini Card, 2 COM, Rev.A1.0

## PER-V03B

## ■ SDVO To DVI Module



## Specifications

System	
Form factor	59.75mm x 50.95mm to be locked by Mini-PCI slot
Chipset	Chrontel CH7307C
Input	High-speed SDVO* (1 G ~ 2 G bps) AC-coupled serial differential RGB inputs
Pixel Rate	165M pixels/second
Resolution	Up to 1920 x 1080
Power Management	Programmable power management
Programming	Programmable via serial port
Driver	Complete windows driver support
Operating Temperature	32°F ~ 140°F (0°C ~ 60°C)

## Features

- Form Factor 59.75mm x 50.95mm To Be Locked By Mini-PCI Slot
- DVI Hot Plug Detection
- Supports Up to 1920 x 1080 Resolution Displays

## Packing List

- 170340030F  
SDVO Cable
- Quick Installation Guide
- TF-PER-V03B

## Ordering Information

- **TF-PER-V03B-A10**  
SDVO to DVI module with Chrontel 7307C, for EMB-9458T, EMB-9658T
- **TF-PER-V03B-A10-01**  
SDVO to DVI module with Chrontel 7307C, Metal Bracket, for EMB-9458T, EMB-9658T
- **TF-PER-V03B-A10-02**  
SDVO to DVI module with Chrontel 7307C for XTX Modules

## ECX Proprietary Modules