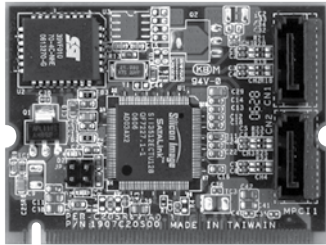


# PER-C20S

Mini-PCI Module With 2 SATA 1 Ports



## Specifications

Form Factor	Mini-PCI Type 3 B 1.8" x 2.35" (44.5mm x 59.6mm)
Controller	Silicon Image™ Sil 3512
Function	Provides two SATA 1 Ports, supports RAID 0, 1 function
Speed	1.5Gbps
Power Requirement	+3.3V
Operating Temperature	32°F ~ 140°F (0°C ~ 60°C)

## Features

- Mini-PCI Type 3 Interface
- Silicon Image™ Sil 3512 2-Port Serial ATA Host Controller
- RAID 0, 1
- +3.3V Only Operation

## Packing List

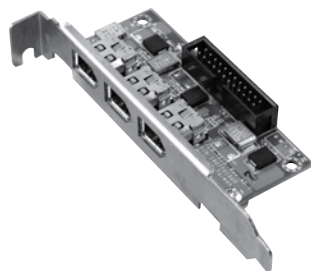
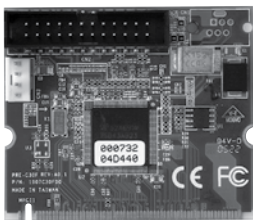
- SATA Cable
- Quick Installation Guide
- Product CD
- PER-C20S

## Ordering Information

- **TF-PER-C20S-A10**  
Mini-PCI, 2-Port SATA 1 Module, Rev. A1.0

# PER-C30F

Mini-PCI Module With 3-port IEEE 1394a (Firewire)



## Specifications

Form Factor	Mini-PCI Type 3 A 2" x 2.35" (50.8mm x 59.6mm)
IEEE 1394a Chipset	TI TS843AB23
Power Requirement	+3.3V, +5V, +12V
Operating Temperature	32°F ~ 140°F (0°C ~ 60°C)

## Features

- Three IEEE 1394a Ports Up To 400Mbps
- TI Single Chip For IEEE 1394a Solution

## Packing List

- **1701240150**  
Flat Cable
- **9697T01002**  
PER-T010 Daughter Board
- **Quick Installation Guide**
- **Product CD**
- **PER-C30F**

## Ordering Information

- **TF-PER-C30F-A10**  
Mini-PCI, 3-port IEEE 1394a Module, Rev. A1.0