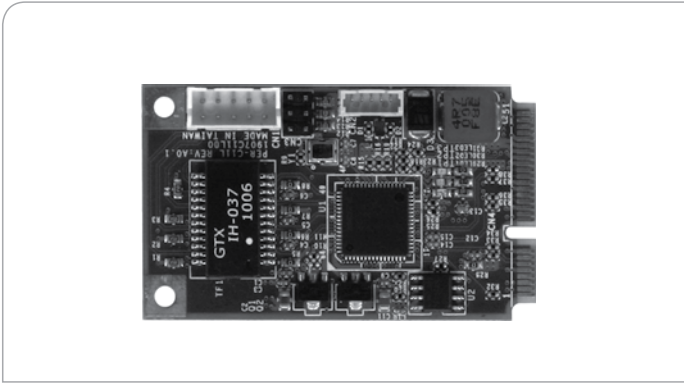


PER-C11L

Mini-PCIe Module With One Ethernet Port and One USB Port



Specifications

Form Factor	Mini Card Type (30mm x 50.95mm)
Controller	Intel® 82574L Gigabit Ethernet Chip
Speed	Supports 10/100/1000Base-TX, Auto-negotiation
Function	IEEE 802.3x compliant flow control support IEEE 802.1Q Virtual LAN supports Wake-On-LAN function
Power Requirement	Supports ACPI, PCI power management
Operating Temperature	32 °F ~ 140 °F (0 °C ~ 60 °C)

Features

- PCI Express Mini Card Interface
- One Intel® 82574L Gigabit LAN Chip
- USB x 1

Packing List

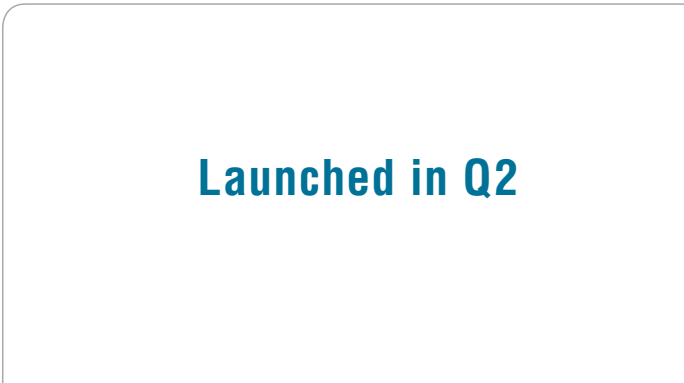
- LAN Cable
- USB Cable
- Product CD (Including Quick Guide)
- PER-C11L

Ordering Information

- **TF-PER-C11L-A10**
Mini-PCIe, 10/100/1000Base-TX Ethernet Module w/ Intel® 82574L, Rev. A1.0

PER-C21C

Mini-PCIe Module With Two Isolated UART Ports



Specifications

Form Factor	Mini Card Type (30mm x 50.95mm)
UART Chipset	MosChip (MCS9922)
Port Number	2 for isolated RS-232 port (only TXD and RXD)
Power Requirement	+ 3.3V
Operating Temperature	32 °F ~ 140 °F (0 °C ~ 60 °C)

Features

- PCI Express Mini Card Interface
- Two UART Tx & Rx With Isolation

Packing List

- **1701090150**
RS-232 Cable
- Product CD (Including Quick Guide)
- PER-C21C

Ordering Information

- **TF-PER-C21C-A10**
Mini-PCIe, 2-port Isolation RS-232 Module, Rev. A1.0