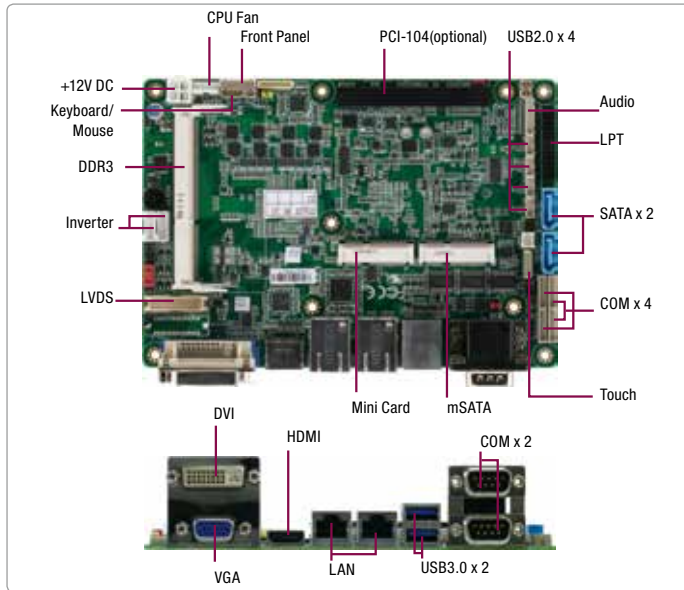


# EPIC-QM77

EPIC Board with Onboard Intel® Core™ i7-3555LE/Celeron® 847E Processor



## Features

- Onboard Intel® Core™ i7-3555LE/Celeron® 847E Processor
- Intel® 3rd Core™ i Series + QM77/HM76
- 204-pin SODIMM DDR3 1333/1600MHz, Up to 8GB
- Intel® 82579LM x 1/ Intel® 82583V x 1, 10/100/1000Base-TX LANs, RJ-45 x 2
- 18/24-bit Single/Dual-Channel LVDS, CRT, DVI-I(Optional), HDMI
- 2CH HD Audio
- SATA 6.0Gb/s x 2, mSATA (Full-Size) Slot x 1
- USB 3.0 x 2, USB2.0 x 4, COM x 6
- Mini Card x 1, 16-bit Digital I/O Co-lay with LPT, PCI-104 (Optional), TPM (Optional), Touch (Optional)
- +12V, AT/ATX (Default)
- CPU and PCH On Solder Side For Easy System Integration
- Supports Triple Simultaneous Display
- Supports iAMT8.0 and RAID 0,1 For QM77 Chipset
- Supports AAEON Hi-Safe/Hi-Manager SDK & Utility

## Specifications

System	
Form Factor	EPIC
Processor	Intel® 3rd Core™ i7-3555LE/Celeron® 847E
System Memory	204-pin SODIMM DDR3/L 1333/1600MHz up to 8GB
Chipset	Intel® 3rd Core™ i7-3555LE + QM77; Intel® Celeron® 847E + HM76
I/O Chipset	Fintek 81866D
Ethernet	Intel® 82579LM x 1/Intel® 82583V x 1, 10/100/1000Base-TX, RJ-45 x 2
BIOS	UEFI
Wake On LAN	Yes
Watchdog Timer	Programmable 255 level System Reset
H/W Status Monitoring	Supports Power Supply Voltage, FAN Speed and Temperature Monitoring
Expansion Interface	Mini Card, PCI-104(optional), TPM (optional)
Battery	Lithium battery
Power Requirement	+12V,AT/ATX (default)
Power Consumption (Typical)	Intel® Core™ i7-3555LE 2.5GHz, 8GB 3.04A@+12V
Board Size	4.5" x 6.5"(115mm x 165mm)
Gross Weight	1.2 lb (0.5 Kg)
Operation Temperature	32 °F ~ 140 °F (0 °C ~ 60 °C)
Storage Temperature	-40 °F ~ 176 °F (-40 °C ~ 80 °C)
Operation Humidity	0% ~ 90% relative humidity, non-condensing
MTBF (Hours)	88,000
Display	
Supports CRT/LCD/HDMI/DVI simultaneous/Dual view displays	
Chipset	Intel® QM77/HM76 integrated
Resolution	Up to 2048 x 1536 for CRT, Up to 1920 x 1200 for HDMI/ DVI(optional) Up to 1920 x 1080 for LCD
LCD Interface	Up to 24-bit Dual-Channel LVDS x 1
I/O	
Storage	SATA x 2, mSATA x 1
Serial Port	RS-232 x 5, RS-232/422/485 x 1 (COM2)
Parallel Port	SPP/EPP/ECP x 1
USB	USB 3.0 x 2, USB 2.0 x 4
PS/2 Port	Keyboard x 1, Mouse x 1
DIO	Digital I/O Support 16-bit(Programmable) Co-lay with LPT
Audio	Line-in/Line-out/Mic-in
Touch Screen	Supports 4/5-wire resistive touch screen (optional)



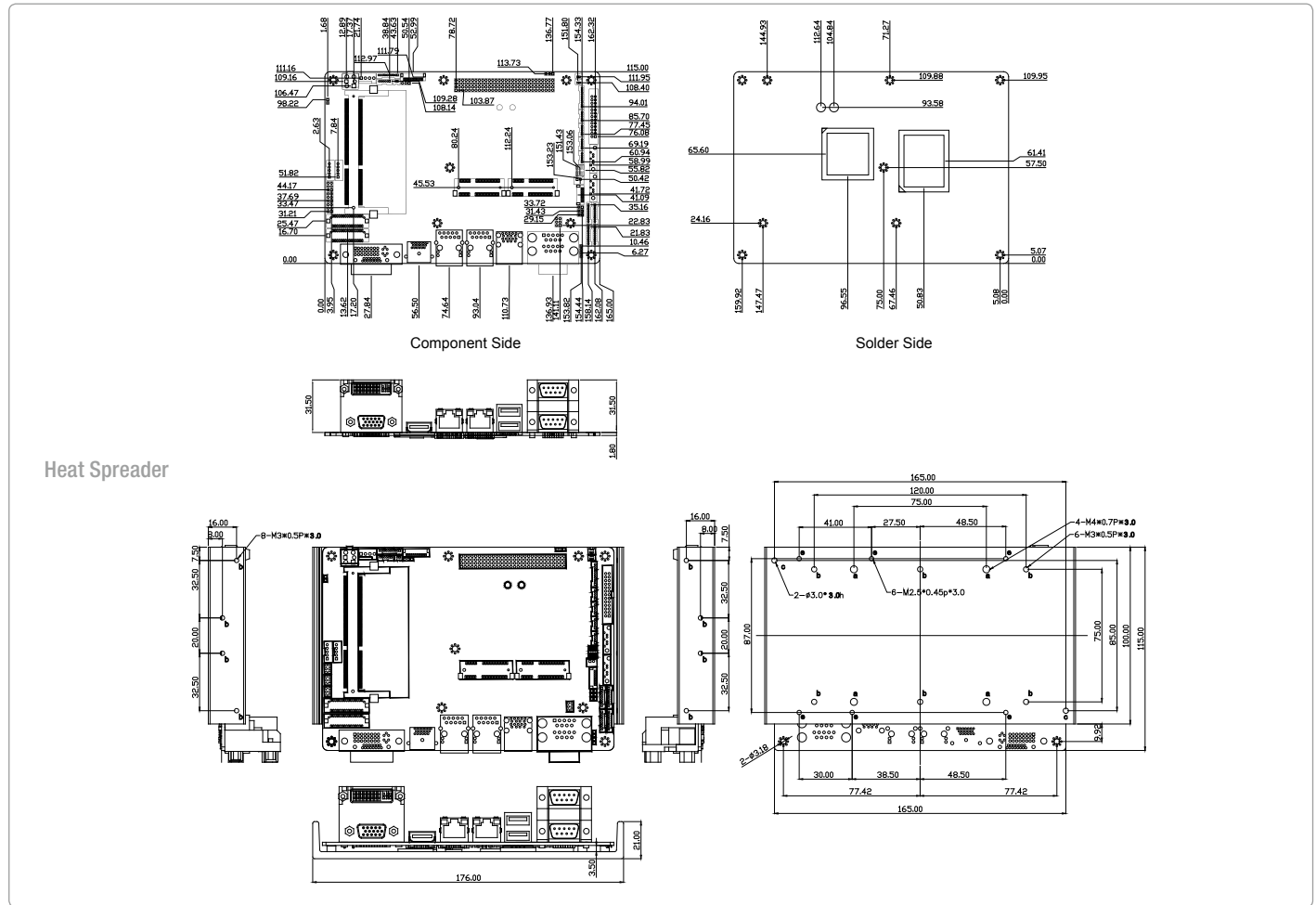
## Packing List

- 1709070500  
SATA Cable
- 1702150155  
SATA Power Cable
- 9657666600  
Jumper Cap
- Product DVD
- EPIC-QM77 with Heat Spreader

# EPIC-QM77

## Dimension

Unit: mm



## Ordering Information

Part Number	CPU	Fan/Fanless	Display Combination	Storage	LVDS	LAN	USB	RS-232	RS-232/422/485	Expansion Slot	Power	Temp
EPIC-QM77-A10	i7-3555LE	Heat Spreader	CRT + LVDS 2 CRT + HDMI or DVI LVDS 2 + HDMI CRT + LVDS 2 + HDMI or DVI	SATA x 2 mSATA x 1	24b, 2CH	2	USB3.0 x 2, USB2.0 x 4	5	1	Mini Card x 1, the 2nd Mini Card (Optional)	+12V, AT/ATX	0°C ~ 60°C
EPIC-QM77-A10-01	Celeron® 847E	Heat Spreader	CRT + LVDS 2 CRT + HDMI LVDS 2 + HDMI	SATA x 2 mSATA x 1	24b, 2CH	2	USB3.0 x 2, USB2.0 x 4	5	1	Mini Card x 1, the 2nd Mini Card (Optional)	+12V, AT/ATX	0°C ~ 60°C

## Optional Accessories

- **1701260200**  
DIO/LPT, 20cm
- **1700060155**  
PS/2 Keyboard and Mouse, 15cm
- **1701090150**  
COM Port Cable, 15cm
- **1702150155**  
SATA Power Cable, 15cm
- **1700050207**  
USB Cable, 20cm
- **1709100254**  
Audio Cable, 51cm
- **M10CV07000**  
Metal, AI, Heatspreader, 176mm x 100mm x 21mm