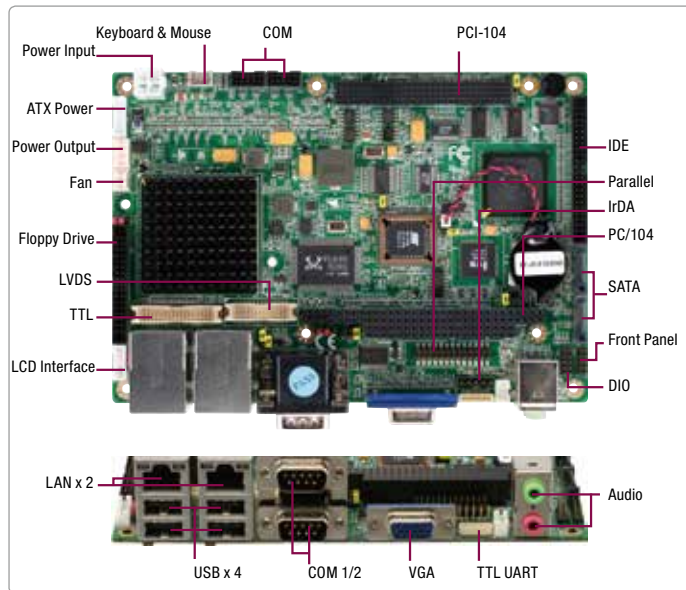


EPIC-5536

EPIC Board with Onboard AMD Geode™ LX800 (500 MHz) Processor



Features

- Onboard AMD Geode™ LX800 Processor
- AMD LX800 + CS5536
- DDR 333MHz SODIMM, Up to 1 GB and DDR400MHz, Up to 512 MB
- 10/100Base-TX Ethernet x 2
- Up to 24-bit TTL/LVDS LCD Panel
- AC97 2.0 Codec 2CH Audio
- EIDE x 1, SATA 1.5Gb/s x 2 with RAID 0,1, CompactFlash™ x 1, Floppy Disk Drive x 1
- Parallel x 1, COM x 5, USB2.0 x 4, 8-bit Digital I/O x 1
- PC/104+ Expansion
- +12V, AT/ATX

Specifications

| System | |
|-----------------------------|--|
| Form Factor | EPIC |
| Processor | Onboard AMD Geode™ LX800 (500 MHz) Processor |
| System Memory | 200-pin DDR 333/400MHz SODIMM x 1, up to 1 GB for DDR333 & 512 MB for DDR400 |
| Chipset | AMD LX series + CS5536 |
| I/O Chipset | ITE IT8712 + Fintek F81216DG |
| Ethernet | Realtek 8100C 10/100Base-TX, RJ-45 x 2, (Optional RTL 8110S Gigabit LAN) |
| BIOS | Award Plug & Play BIOS – 1 MB ROM |
| Wake On LAN | Yes |
| Watchdog Timer | Generates a time-out system reset |
| H/W Status Monitoring | Supports power supply voltages and temperature monitoring |
| Expansion Interface | PC/104+ (PC/104 + PCI-104) |
| Battery | Lithium battery |
| Power Requirement | +12V, AT/ATX |
| Power Consumption (Typical) | LX800 500 MHz, DDR333 1 GB 1.35A@+12V |
| Board Size | 4.53" (L) x 6.50" (W) (115mm x 165mm) |
| Gross Weight | 1.2 lb (0.5 Kg) |
| Operating Temperature | 32°F ~ 140°F (0°C ~ 60°C) |
| Storage Temperature | -40°F ~176°F (-40°C ~ 80°C) |
| Operating Humidity | 0% ~ 90% relative humidity, non-condensing |
| MTBF (Hours) | 70,000 |
| Display | |
| | Supports CRT/LCD simultaneous display |
| Chipset | AMD Geode™ LX |
| Memory | Shared system memory up to 254 MB |
| Resolutions | Up to 1920 x 1440 for CRT Up to 1024 x 768 for LCD |
| LCD Interface | Up to 24-bit single channel TTL / LVDS LCD (18/24-bit single channel LVDS is configured by manufacturer) |
| LCD Interface | Yes, 5V or 12V |
| I/O | |
| Storage | EIDE x 1 (UDMA 100 for two devices), SATA 1.5Gb/s x 2, Type 2 CompactFlash™ x 1, Floppy Disk Drive x 1 |
| Serial Port | RS-232 x 3, TTL UART x 1, RS-232/422/485 x 1 |
| Parallel | SPP/ EPP/ ECP mode |
| USB | USB2.0 x 4 |
| PS/2 Port | Keyboard x 1, Mouse x 1 |
| Digital I/O | Supports 8-bit (Programmable) |
| IrDA | Optional one IrDA Tx/Rx header |
| Audio | Line-In, Line-Out & MIC-In |



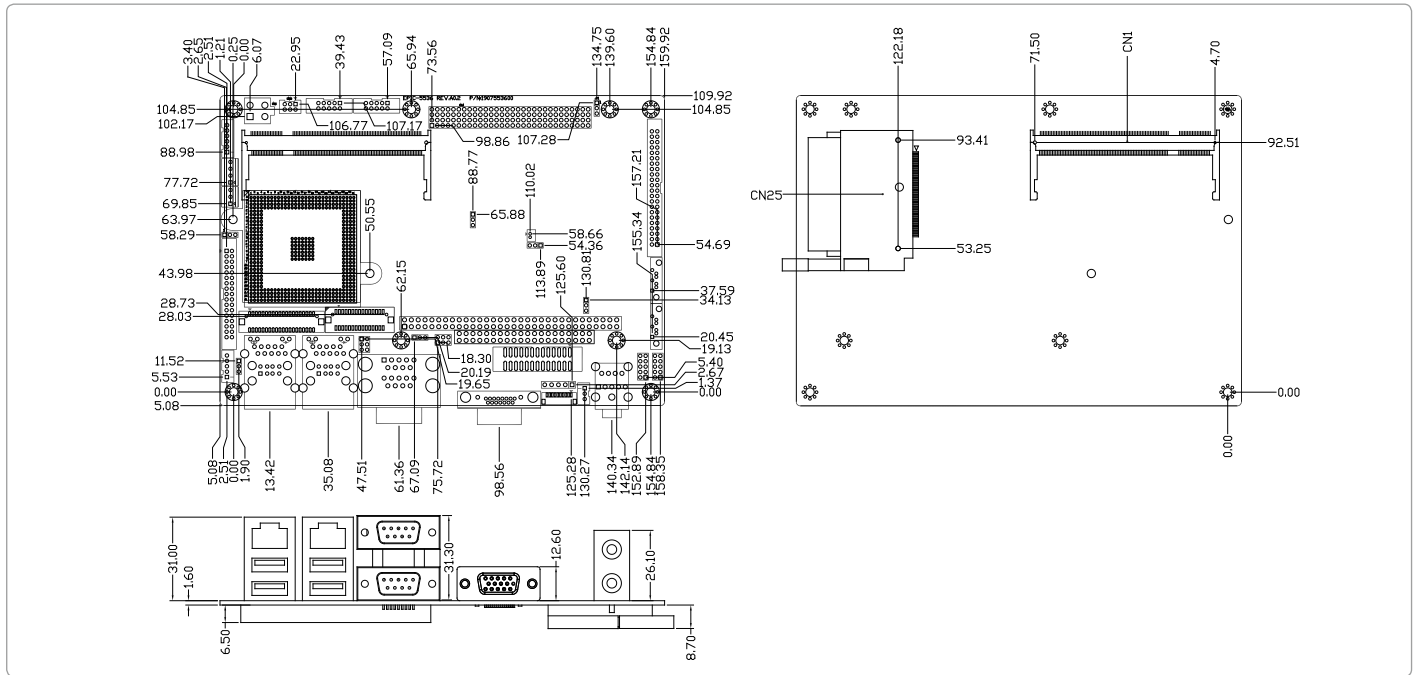
Packing List

- **9681945600**
Cable Kit for EPIC-5536
1701440500 IDE Cable, Length 30+20cm
1700060152 Keyboard/Mouse Cable, Length 15cm
- **9657666600**
Jumper Cap
- **Product CD**
- **EPIC-5536 With Heatsink**

EPIC-5536

Dimension

Unit: mm



Ordering Information

| Part Number | CPU | Fan/Fanless | Display | LVDS | Storage | LAN | USB | RS-232 | RS-232/422/485 | Expansion Slot | Power | Temp |
|---------------------|------------------|-------------|-----------|----------|--|--------|-----|--------|----------------|----------------|--------------|------------|
| TF-EPIC-5536-A10 | AMD Geode™ LX800 | Fanless | CRT+ LVDS | 24b, 1CH | SATA x 2 IDE x 1 CompactFlash™ x 1 | FE x 2 | 4 | 3 | 1 | PC/104* x 1 | +12V, AT/ATX | 0°C – 60°C |
| TF-EPIC-5536-A10-01 | AMD Geode™ LX800 | Fanless | CRT+ LVDS | 18b, 1CH | SATA x 2 IDE x 1 CompactFlash™ x 1 | FE x 2 | 4 | 3 | 1 | PC/104* x 1 | +12V, AT/ATX | 0°C – 60°C |

Optional Accessories

- **TF-PCM-FA00-A10**
PC/104 Board Plus to Mini-PCI Module Converter
- **1701260200**
LPT Cable, Length 20cm
- **1700060152**
Keyboard/Mouse Cable, Length 15cm
- **1709070500**
SATA Cable, Length 50cm
- **1701100206**
COM Port Cable, Length 20cm
- **1701340703**
FDD Cable, Length 70 cm
- **1702040109**
Power Output Cable, Length 10cm
- **1703030102**
Audio Cable (Line-in), Length 10cm
- **1701440500**
IDE Cable, Length 30+20cm